

## CHARTER SCHOOL PERFORMANCE CERTIFICATE

This Performance Certificate (“Certificate”) is executed on **June 8, 2023**, by and between the Idaho Public Charter School Commission (the “Authorizer”) and **Idaho Virtual Academy, Incorporated** (the “Charter Holder”) for the purpose of operating **Idaho Virtual Academy, Incorporated** (the “School”), an independent public school organized as an Idaho nonprofit corporation and established under the Public Charter Schools Act of 1998, Idaho Code section 33-5201 *et seq.*, as amended (the “Charter Schools Act”).

### RECITALS

WHEREAS, **Idaho Virtual Academy, Incorporated** is a non-profit entity incorporated with a board of directors; and

WHEREAS, the School began operations in the year **2002**; and

WHEREAS, on **October 28, 2004**, the Authorizer approved a petition for the transfer of the School’s charter to the Authorizer; and

WHEREAS, the School’s charter was renewed on **March 1, 2018**, for a five-year term of operations,

WHEREAS, on **February 24, 2023**, the Authorizer renewed the School’s charter for a subsequent five-year term of operations to begin July 1, 2023 and end on June 30, 2028.

NOW THEREFORE in consideration of the foregoing recitals and the mutual understandings contained herein, the Authorizer and **Idaho Virtual Academy, Incorporated** agree as follows:

### SECTION 1: TERMS OF AUTHORIZATION

- A. Establishment of School.** The Charter Holder is hereby authorized to implement at the School the program described in the Charter, attached to this Certificate as Appendix B and incorporated herein by this reference. Any significant changes to any section of the Charter, including the educational program, facilities plan, financial plan, or the management plan, during the School’s pre-operational period or first operational term shall be treated as an amendment in accordance with the Authorizer’s policy.
- B. Term of Agreement.** The School’s operational term shall be from July 1, **2023** and end on June 30, **2028**. Subsequent terms of operation may be issued by the Authorizer in accordance with Idaho Code and Authorizer policy.

### SECTION 2: EDUCATIONAL PROGRAM

- A. School Mission.** The mission of the School is as follows: **Building a community of engaged learners.**

- B. Grades Served.** The School may serve students in grades **Kindergarten** through **12**.
- C. Design Elements.** The School shall implement and maintain the following essential design elements of its educational program:
- **Innovative and Effective Educational Program:** Idaho Virtual Academy seeks to develop those qualities of mind and character that will help students become active, thoughtful, and responsible citizens. Furthermore, it aims to help students meet high expectations by offering an individualized, rigorous, self-paced, and mastery-based instructional program that incorporates significant parental involvement. This can be measured via observation and lesson plans.
  - **Rigorous Curriculum:** Idaho Virtual Academy utilizes the award winning K12 curriculum. This can be measured via curriculum review.
  - **Effective Teachers:** Idaho Virtual Academy is committed to employing highly qualified, innovative and committed teachers. Professional growth is supported through meaningful professional development focused on continuous improvement. This can be measured via observation and staff interviews.
  - **Parental Involvement:** When parents become active and informed partners in their child's education, test scores rise, drop-out rates fall, and the active pursuit of learning becomes a compelling focus for each family. This can be measured via policy review.
  - **Partnership:** Teachers, parents and students uniquely connected in a 21st Century Learning Community designed to support and enhance individual student learning. This can be measured via observation and policy review.
  - **21st Century Skills:** Students will gain the skills, knowledge and expertise to succeed in work and life in the 21st century. This can be measured via observation and curriculum review.
  - **Performance based accountability:** IDVA uses technology to alter the typical school day and school year. Mastering curriculum early allows students to move ahead and those who need extra time or remediation are able to work at an individualized pace. Student mastery of State achievement standards is measured through formative and interim assessment throughout the school year and, additionally, at the end of each school year through the state assessment system. This can be measured via observation, data analysis, and curriculum review.
- D. Standardized Testing.** Students of the School shall be tested with the same standardized tests as other Idaho public school students.
- E. Accreditation.** The School shall be accredited as provided by rule of the State Board of Education. The School shall be accredited or appropriately credentialed by Cognia. All reports issued to the School from the accrediting agency shall be submitted to the Authorizer within five days of receipt.

### SECTION 3: SCHOOL GOVERNANCE

- A. Governing Board.** The School shall be governed by a non-profit board of directors (the "Board") incorporated by the Charter Holder. The Board shall serve as public agents authorized by the Authorizer, in a manner that is consistent with the terms of this Certificate, so long as such

provisions are in accordance with state and federal laws, rules and regulations. The Board shall have final authority with respect to the School's operation, and shall have the responsibility of overseeing academic achievement, financial stability, and operational management of the School. The Charter Holder shall also be responsible for maintaining and enforcing a compliant Board and providing overall Board stewardship for the School.

- B. Articles of Incorporation and Bylaws.** The articles of incorporation and bylaws of the Charter Holder shall provide for governance of the operation of the School as a nonprofit corporation and a public charter school, and shall at all times be consistent with all applicable laws, rules, regulations, and this Certificate. The Charter Holder shall notify the Authorizer of any modification to the articles of incorporation or bylaws within five business days of approval by the Charter Holder.
- C. Charter Board Composition.** The composition of the Board shall at all times be determined by and consistent with the articles of incorporation and bylaws, and all applicable laws, rules, regulations, and policies. The Charter Holder shall notify the Authorizer of any changes to its composition and provide an amended School Leadership Roster within five business days of it taking effect.

#### SECTION 4: AUTHORIZER ROLE AND RESPONSIBILITIES

- A. Oversight Allowing Autonomy.** The Authorizer's role shall be to evaluate the School's performance outcomes according to this Certificate and the Performance Framework, and shall be to provide compliance oversight. The Authorizer shall comply with the provisions of the Charter Schools Act and the terms of this Certificate in a manner that does not unduly inhibit the autonomy of the School.
- B. Charter School Performance Framework.** The Charter School Performance Framework ("Performance Framework") is attached and incorporated into this agreement as Appendix A. The Performance Framework shall be used to annually evaluate the School's academic achievement, Board stewardship, operational management, and financial stability. The specific terms of the Performance Framework are determined by the Authorizer and shall be binding on the School.
- C. Separate Academic Evaluations.** The aggregated K-12 virtual program and the virtual-alternative program shall each be evaluated separately with regard to the academic section of the Performance Framework.
- D. Identified Comparison Group.** For purposes of evaluating the School against the metrics and measures established in the Performance Framework, the School's comparison group shall be identified as described below and shall be established for the length of the Certificate term.
  - i.** The comparison group for the School's virtual program shall include all virtual schools operating in Idaho (excluding the School's virtual program).
  - ii.** The comparison group for the School's virtual-alternative program shall include all alternative schools operating in Idaho (excluding the School's virtual-alternative program).
- E. Authorizer to Monitor School Performance.** The Authorizer shall monitor and report on the School's progress in relation to the indicators, measures, metrics, and targets set out in the

Performance Framework. A formal report of the School's academic, financial, and operational performance ("Performance Report") shall be provided to the school and the public by the Authorizer annually. Data necessary to conduct this evaluation will be collected throughout the year. Additional reviews may be necessary if compliance concerns arise.

- F. School Performance.** The School shall meet standard on all measures of the Performance Framework. The Authorizer shall renew any charter in which the School met all the terms of its Certificate, including all appendices, at the time of renewal.
- G. Performance Framework as Basis for Renewal of Charter.** The School's performance in relation to the Performance Framework shall provide the basis upon which the Authorizer shall decide whether to renew the School's Charter at the end of the Certificate term.
- H. Required Reports.** The School shall prepare and submit reports as required by the Authorizer's policy.
- I. Authorizer's Right to Review.** The Authorizer maintains the right to request and review additional documentation if such becomes necessary in the course of regular oversight duties or to investigate the validity of a compliance concern. The Authorizer shall conduct its reviews in a manner that does not unduly inhibit the autonomy granted to the School.
- J. Site Visits.** The Authorizer may conduct site visits in accordance with the Authorizer's policy. Reports from any site visit shall be made available to the School and shall be included in the School's annual Performance Report.

## SECTION 5: SCHOOL OPERATIONS

- A. In General.** The School and the Charter Holder shall operate at all times in accordance with all federal and state laws, rules, regulations, local ordinances, and Authorizer policies applicable to public charter schools.

**A. Maximum Enrollment.** The maximum number of students who may be enrolled in the school will be determined by the Board each school year, no later than the annual meeting prior to that school year. The Board must also establish an enrollment deadline(s). The Charter Board may establish different enrollment caps for the general program or specific grade levels or programs. As defined in IDAPA 08.02.04 section 203.02, caps shall not be placed on special education or alternative programs. The enrollment cap(s) and/or deadline must be publicly posted as soon as reasonably possible after the Board makes its annual determination and remain posted for the remainder of the affected school year. Students shall be enrolled until the cap or deadline is reached, whichever occurs first. Thereafter, student applications will be accepted for enrollment during the following school year.

- B. Equitable Enrollment Procedures.** The School shall make student recruitment, admissions, enrollment, and retention decisions in a nondiscriminatory manner and without regard to race, color, creed, national origin, sex, marital status, religion, ancestry, disability or need for special education services. In no event may the School limit admission based on race, ethnicity, national origin, disability, gender, income level, athletic ability, or proficiency in the English language. If there are more applications to enroll in the School than there are spaces available, the School

shall select students to attend using a random selection process that shall be publicly noticed and open to the public.

- i. **Calendar.** The School shall operate on a traditional nine-month calendar in which the last day of the regular term shall fall on or before June 30
  - ii. The School will offer a summer school session for the purpose of acceleration and/or credit recovery.
- C. School Facilities.** The School shall operate at the following location(s): 1965 S. Eagle Road, Meridian, ID 83642. The School shall provide the Authorizer with facilities documentation, including occupancy permits, fire marshal reports, building inspection reports, and health department reports for any facility newly occupied by the School, and any remodeling or construction project for which such documentation is necessary in accordance with Authorizer policy and in accordance with law, rule, regulations, and authorizer policy.
- D. Attendance Area.** The School's primary attendance area shall be used for the purposes of determining applicability of this enrollment preference category. The School's primary attendance area is as follows: State of Idaho.
- E. Staff.** Instructional staff shall be certified as provided by rule of the State Board of Education. All full-time staff members of the School shall be covered by the Public Employee Retirement System of Idaho, federal social security, unemployment insurance, worker's compensation insurance, and health insurance.
- F. Alignment with All Applicable Law.** The School shall comply with all applicable federal and state laws, rules, and regulations. In the event any such laws, rules, or regulations are amended, the School shall be bound by any such amendment upon the effective date of said amendment.

## SECTION 6: SCHOOL FINANCE

- A. General.** The School shall comply with all applicable financial and budget laws, rules, regulations, and financial reporting requirements, as well as the requirements contained in the School's Performance Framework.
- B. Financial Controls.** At all times, the Charter Holder shall ensure that the School maintains appropriate governance, managerial procedures, and financial controls, which shall include, but not be limited to: (1) commonly accepted accounting practices and the capacity to implement them; (2) a checking account; (3) adequate payroll procedures; (4) procedures for the creation and review of monthly and quarterly financial reports, which procedures shall specifically identify the individual who will be responsible for preparing such financial reports in the following fiscal year; (5) internal control procedures for cash receipts, cash disbursements and purchases; and (6) maintenance of asset registers and financial procedures for grants, all in accordance with state and federal laws, rules, regulations, and Authorizer policy.
- C. Financial Audit.** The School shall submit audited financial statements from an independent auditor to the Authorizer no later than November 1 of each year.
- D. Annual Budgets.** The School shall adopt a budget for each fiscal year, prior to the beginning of the fiscal year. The budget shall be in the Idaho Financial Accounting Reporting Management Systems (IFARMS) format or any other format as may be reasonably requested by the Authorizer.

## SECTION 7: TERMINATION, NON-RENEWAL AND REVOCATION

- A. Relinquishment.** Should the Charter Holder choose to relinquish its Charter before the expiration of this Certificate, it may do so upon written notice to the Authorizer. In such a case, the Authorizer's closure protocol shall begin immediately following written notification.
- B. Nonrenewal.** The Authorizer may non-renew the Charter at the expiration of the Certificate if the School failed to meet one or more of the terms of its Certificate, including the Performance Framework. The Charter Holder may appeal a decision to non-renew directly to the State Board of Education.
- C. Revocation.** The School's Charter may be revoked as provided by Idaho Code section 33-5209C. In such an event, the Authorizer shall consider whether to revoke the School's Charter at its next regularly scheduled meeting. The decision shall be made at that time. The Charter Holder may appeal a decision to revoke directly to the State Board of Education.
- D. Closure.** The Authorizer's closure protocol shall begin immediately after a decision to relinquish is made by the Charter Holder, or a decision to revoke or non-renew or is made by the Authorizer. Closure protocol shall begin regardless of whether the Charter Holder appeals the decision. In the event that closure protocol begins, the School shall cease operations no later than the following June 30. Closure protocol shall only cease if the State Board of Education overturns the Authorizer's decision.

## SECTION 8: MISCELLANEOUS

- A. No Employee or Agency Relationship.** None of the provisions of this Certificate will be construed to create a relationship of agency, representation, joint venture, partnership, ownership, or employment between the Authorizer and the School.
- B. Additional Services.** Except as may be expressly provided in this Certificate, as set forth in any subsequent written agreement between the School and the Authorizer, or as may be required by law, neither the School nor the Authorizer shall be entitled to the use of or access to the services, supplies, or facilities of the other.
- C. No Third-Party Beneficiary.** This Certificate shall not create any rights in any third parties, nor shall any third party be entitled to enforce any rights or obligations that may be possessed by either party to this Certificate.
- D. Amendment.** This Certificate may be amended by agreement between the School and the Authorizer in accordance with Authorizer policy. All amendments must be in writing and signed by the School and the Authorizer.

IN WITNESS WHEREOF, the Authorizer and the Charter Holder have executed this Performance Certificate to be effective **June 8, 2023**.

Alan L Reed  
Alan L Reed (Jul 3, 2023 16:00 MDT)

Jul 3, 2023

---

**Chairman**  
**Idaho Public Charter School Commission**

Jeffrey D Thompson  
Jeffrey D Thompson (Jul 3, 2023 16:44 EDT)

Jul 3, 2023

---

**Chairman**  
**Idaho Virtual Academy, Incorporated** Governing Board

Appendix A: Performance Framework

Appendix B: Charter

Appendix C: IPCSC Closure Protocol



Appendix A: Performance Framework



PERFORMANCE FRAMEWORK GUIDANCE: ACADEMIC MEASURES

*Adopted 8/13/2020*

*Revised 4/14/2022*

Idaho Public Charter School Commission

514 W Jefferson Street, Suite 303

Boise, Idaho 83702

Phone: (208)332-1561

[pcsc@osbe.idaho.gov](mailto:pcsc@osbe.idaho.gov)

Alan Reed, Chairman

Jenn Thompson, Director

Academic Framework - Adopted 8/13/20

Revised 4/14/22

Page 1

# ACADEMIC MEASURES

## All School Measures

1. Math Proficiency
2. ELA Proficiency
3. Math Growth
4. ELA Growth
5. Literacy Proficiency
6. College and Career Readiness

Comparison Group: Specific to school

# 1. MATH PROFICIENCY

**Proficiency Rate:** The IPCSC will use the proficiency rates as determined by the Idaho Accountability Framework and reported via the Idaho Report Card.

Math and ELA Proficiency Rubric	
Exceeds Standard	The school's proficiency rate is greater than one standard deviation above the mean of the identified comparison group, <b>OR</b> The school's proficiency average is in 90 <sup>th</sup> percentile of all Idaho schools.
Meets Standard	<b>The school's proficiency rate is equal to the mean or falls between the mean and one standard deviation above the mean of the identified comparison group.</b>
Approaches Standard	The school's proficiency rate falls between the mean and one standard deviation below the mean of the identified comparison group.
Does Not Meet Standard	The school's proficiency rate is more than one standard deviation below the mean of the identified comparison group, <b>OR</b> the school has been identified for comprehensive or targeted support for three consecutive years as per the Idaho Consolidated Plan.

## 2. ELA PROFICIENCY

**Proficiency Rate:** The IPCSC will use the proficiency rates as determined by the Idaho Accountability Framework and reported via the Idaho Report Card.

<b>Math and ELA Proficiency Rubric</b>	
Exceeds Standard	The school's proficiency rate is greater than one standard deviation above the mean of the identified comparison group, <b>OR</b> The school's proficiency average is in 90 <sup>th</sup> percentile of all Idaho schools.
<b>Meets Standard</b>	<b>The school's proficiency rate is equal to the mean OR Falls between the mean and one standard deviation above the mean of the identified comparison group.</b>
Approaches Standard	The school's proficiency rate falls between the mean and one standard deviation below the mean of the identified comparison group.
Does Not Meet Standard	The school's proficiency rate is more than one standard deviation below the mean of the identified comparison group, <b>OR</b> the school has been identified for comprehensive or targeted support for three consecutive years as per the Idaho Consolidated Plan.

### 3. MATH GROWTH

**Growth Rate:** The IPCSC will use the proficiency rates as determined by the Idaho Accountability Framework and reported via the Idaho Report Card.

Growth Rubric Math	
Exceeds Standard	The percentage of students in grades 3-8 who did not achieve proficiency on the current year's assessment but who did make adequate growth toward proficiency is greater than one standard deviation above the mean of the identified comparison group, <b>OR</b> The school's growth rate is in the 90 <sup>th</sup> percentile of all Idaho public schools.
Meets Standard	<b>The percentage of students in grades 3-8 who did not achieve proficiency on the current year's assessment but who did make adequate growth toward proficiency is equal to the mean or falls between the mean and one standard deviation above the mean of the identified comparison group, OR The growth rate increased by at least 10% over the previous year.</b>
Approaches Standard	The percentage of students in grades 3-8 who did not achieve proficiency on the current year's assessment but who did make adequate growth toward proficiency falls between the mean and one standard deviation below the mean of the identified comparison group.
Does Not Meet Standard	The percentage of students in grades 3-8 who did not achieve proficiency on the current year's assessment made adequate growth toward proficiency is more than one standard deviation below the mean of the identified comparison group.

## 4. ELA GROWTH

**Growth Rate:** The IPCSC will use the proficiency rates as determined by the Idaho Accountability Framework and reported via the Idaho Report Card.

Growth Rubric ELA	
Exceeds Standard	The percentage of students in grades 3-8 who did not achieve proficiency on the current year's assessment but who did make adequate growth toward proficiency is greater than one standard deviation above the mean of the identified comparison group, <b>OR</b> The school's growth rate is in the 90 <sup>th</sup> percentile of all Idaho public schools.
Meets Standard	<b>The percentage of students in grades 3-8 who did not achieve proficiency on the current year's assessment but who did make adequate growth toward proficiency is equal to the mean or falls between the mean and one standard deviation above the mean of the identified comparison group, OR The growth rate increased by at least 10% over the previous year.</b>
Approaches Standard	The percentage of students in grades 3-8 who did not achieve proficiency on the current year's assessment but who did make adequate growth toward proficiency falls between the mean and one standard deviation below the mean of the identified comparison group.
Does Not Meet Standard	The percentage of students in grades 3-8 who did not achieve proficiency on the current year's assessment made adequate growth toward proficiency is more than one standard deviation below the mean of the identified comparison group.

## 5. LITERACY PROFICIENCY

**Literacy Proficiency Rate:** The IPCSC will use the proficiency rates as determined by the Idaho Accountability Framework and reported via the Idaho Report Card.

Literacy Proficiency Rubric	
Exceeds Standard	<p>One of the following is true:</p> <ul style="list-style-type: none"> <li>The school's proficiency rate on the spring administration of the statewide literacy assessment is greater than one standard deviation above the mean of the identified comparison group;</li> <li>the school's proficiency rate on the spring administration of the statewide literacy assessment is at or above 90%;</li> </ul> <p><b>OR</b></p> <ul style="list-style-type: none"> <li>The fall to spring change in proficiency rate is 20% or greater.</li> </ul>
Meets Standard	<p><b>The school's proficiency on the spring administration of the statewide literacy assessment is equal to the mean or within one standard deviation above the mean of the identified comparison group; OR The school's fall to spring change in proficiency rate is between 10%-19%.</b></p>
Approaches Standard	<p>The school's proficiency on the spring administration of the statewide literacy assessment falls within one standard deviation below the mean of the identified comparison group.</p>
Does Not Meet Standard	<p>The school's proficiency rate on the spring administration of the statewide literacy assessment is more than one standard deviation below the mean of the identified comparison group.</p>



## 6. COLLEGE AND CAREER READINESS

**Adjusted Cohort Graduation Rate (ACGR):** Alternative schools will be evaluated based on their 5-Year ACGR. All other schools will be evaluated based on their 4-Year ACGR.

**Graduation Rate:** The IPCSC will use either the 4-Year ACGR as determined by the Idaho Accountability Framework and reported via the Idaho Report Card.

<b>C&amp;C Readiness Rubric</b>	
Exceeds Standard	The school's 4-Year ACGR is greater than one standard deviation above the identified comparison group, <b>OR</b> The school's ACGR is 90%.
<b>Meets Standard</b>	<b>The school's 4-Year ACGR is equal to the mean OR Falls between the mean and one standard deviation above the mean of the identified comparison group.</b>
Approaches Standard	The school's 4-Year ACGR falls between the mean and one standard deviation below the mean of the identified comparison group.
Does Not Meet Standard	The school's 4-Year ACGR is more than one standard deviation below the identified comparison group.

# ADDITIONAL ACADEMIC MEASURES FOR ALTERNATIVE PROGRAMS GRADES 6-12

## Standard Academic Measures

1. Math Proficiency
2. ELA Proficiency
3. College and Career Readiness (5yr ACGR)

In addition to the standard measures above, the following measures will apply to alternative programs.

## Alternative Program Measures

1. Math Content Mastery
2. ELA Content Mastery
3. Progress Toward Graduation
4. College and Career Readiness- Alternative

In order to be considered an alternative program, 100% of the students enrolled in the program must meet the statutory definition of “at-risk”.

**Comparison Group:** the comparison group for alternative programs includes all schools and IPCSC programs serving 100% at-risk student populations.

## MATH PROFICIENCY (Standard Measure)

**Proficiency Rate:** The IPCSC will use the proficiency rates as determined by the Idaho Accountability Framework and reported via the Idaho Report Card.

Math and ELA Proficiency Rubric	
Exceeds Standard	The school's proficiency rate is greater than one standard deviation above the mean of the identified comparison group, <b>OR</b> The school's proficiency average is in 90 <sup>th</sup> percentile of all Idaho schools.
Meets Standard	<b>The school's proficiency rate is equal to the mean or falls between the mean and one standard deviation above the mean of the identified comparison group.</b>
Approaches Standard	The school's proficiency rate falls between the mean and one standard deviation below the mean of the identified comparison group.
Does Not Meet Standard	The school's proficiency rate is more than one standard deviation below the mean of the identified comparison group, <b>OR</b> the school has been identified for comprehensive or targeted support for three consecutive years as per the Idaho Consolidated Plan.

## MATH CONTENT MASTERY ALTERNATIVE

Note: This measure will be considered in addition to the standard proficiency measure for schools classified as alternative. Non-alternative schools may include this measure as a mission specific goal, in addition to the standard measures, if they feel this data would help the IPCSC understand their school's academic outcomes.

Idaho graduation requirements only require math to be taken in three of the four years of high school. Alternative schools structure this requirement differently. For the purposes of this measure, the total number of continuously enrolled students will exclude students enrolled in a grade for which the school does not require math to be taken.

Alt Proficiency Rubric	
Exceeds Standard	The percentage of continuously enrolled students who have either already completed all ELA/Math graduation requirements or successfully earned credit for the equivalent of 1 year of instruction in the discipline (ELA or Math) is more than 10% above the school's percentage in the previous year, <b>OR</b> The percentage in the current year is greater than 80%.
Meets Standard	<b>The percentage of continuously enrolled students who have either already completed all ELA/Math graduation requirements OR Successfully earned credit for the equivalent of 1 year of instruction in the discipline (ELA or Math) is equal to or up to 10% greater than the school's percentage in the previous year.</b>
Approaches Standard	The percentage of continuously enrolled students who have either already completed all ELA/Math graduation requirements <b>OR</b> Successfully earned credit for the equivalent of 1 year of instruction in the discipline (ELA or Math) is below, but no more than 10% below, the school's percentage in the previous year.
Does Not Meet Standard	The percentage of continuously enrolled students who have either already completed all ELA/Math graduation requirements <b>OR</b> Successfully earned credit for the equivalent of 1 year of instruction in the discipline (ELA or Math) is more than 10% below the school's percentage in the previous year.

## ELA PROFICIENCY (Standard Measure)

**Proficiency Rate:** The IPCSC will use the proficiency rates as determined by the Idaho Accountability Framework and reported via the Idaho Report Card.

Math and ELA Proficiency Rubric	
Exceeds Standard	The school's proficiency rate is greater than one standard deviation above the mean of the identified comparison group, <b>OR</b> The school's proficiency average is in 90 <sup>th</sup> percentile of all Idaho schools.
Meets Standard	<b>The school's proficiency rate is equal to the mean OR Falls between the mean and one standard deviation above the mean of the identified comparison group.</b>
Approaches Standard	The school's proficiency rate falls between the mean and one standard deviation below the mean of the identified comparison group.
Does Not Meet Standard	The school's proficiency rate is more than one standard deviation below the mean of the identified comparison group, <b>OR</b> the school has been identified for comprehensive or targeted support for three consecutive years as per the Idaho Consolidated Plan.

## ELA CONTENT MASTERY ALTERNATIVE

Note: This measure will be considered in addition to the standard proficiency measure for schools classified as alternative. Non-alternative schools may include this measure as a mission specific goal, in addition to the standard measures, if they feel this data would help the IPCSC understand their school's academic outcomes.

Alt Proficiency Rubric	
Exceeds Standard	The percentage of continuously enrolled students who have either already completed all ELA/Math graduation requirements or successfully earned credit for the equivalent of 1 year of instruction in the discipline (ELA or Math) is more than 10% above the school's percentage in the previous year, <b>OR</b> The percentage in the current year is greater than 80%.
Meets Standard	<b>The percentage of continuously enrolled students who have either already completed all ELA/Math graduation requirements OR Successfully earned credit for the equivalent of 1 year of instruction in the discipline (ELA or Math) is equal to or up to 10% greater than the school's percentage in the previous year.</b>
Approaches Standard	The percentage of continuously enrolled students who have either already completed all ELA/Math graduation requirements <b>OR</b> successfully earned credit for the equivalent of 1 year of instruction in the discipline (ELA or Math) is below, but no more than 10% below, the school's percentage in the previous year.
Does Not Meet Standard	The percentage of continuously enrolled students who have either already completed all ELA/Math graduation requirements <b>OR</b> Successfully earned credit for the equivalent of 1 year of instruction in the discipline (ELA or Math) is more than 10% below the school's percentage in the previous year.

## 9-12 PROGRESS TOWARD GRADUATION ALTERNATIVE

Note: This measure will be considered in addition to the standard growth measure for schools classified as alternative. Non-alternative schools may include this measure as a mission specific goal, in addition to the standard measures, if they feel this data would help the IPCSC understand their school's academic outcomes.

For the purpose of this measure, a quarter of instructional enrollment will be calculated based on the number of instructional days reported and may be further modified by mutual agreement of the school and the IPCSC based on the alternative school's course completion structure.

Alt Growth Rubric	
Exceeds Standard	More than 75% of students enrolled in the alternative program earned 2.9 credits for every instructional quarter for which the student was enrolled for 90% of the days in that instructional quarter.
Meets Standard	Between 65% and 75% of students enrolled in the alternative program earned 2.9 credits for every instructional quarter for which the student was enrolled for 90% of the days in that instructional quarter falls, <b>OR</b> his percentage is less than 65% BUT at least 5% greater than in the previous year.
Approaches Standard	Less than 65% of students enrolled in the alternative program earned 2.9 credits for every instructional quarter for which the student was enrolled for 90% of the days in that instructional quarter AND this percentage is between 3% and 5% greater than the previous year.
Does Not Meet Standard	Less than 65% of students enrolled in the alternative program earned 2.9 credits for every instructional quarter for which the student was enrolled for 90% of the days in that instructional quarter AND this percentage is less than 3% greater than in the previous year.

## COLLEGE AND CAREER READINESS (Standard Measure)

**Adjusted Cohort Graduation Rate (ACGR):** Alternative schools will be evaluated based on their 5-Year ACGR. All other schools will be evaluated based on their 4-Year ACGR.

**Graduation Rate:** The IPCSC will use the 5-Year ACGR as determined by the Idaho Accountability Framework and reported via the Idaho Report Card.

<b>C&amp;C Readiness Rubric</b>	
Exceeds Standard	The school's 5-Year ACGR is greater than one standard deviation above the identified comparison group, <b>OR</b> The school's ACGR is 90%.
<b>Meets Standard</b>	<b>The school's 5-Year ACGR is equal to the mean OR Falls between the mean and one standard deviation above the mean of the identified comparison group.</b>
Approaches Standard	The school's 5-Year ACGR falls between the mean and one standard deviation below the mean of the identified comparison group.
Does Not Meet Standard	The school's 5-Year ACGR is more than one standard deviation below the identified comparison group.



## COLLEGE AND CAREER READINESS – ALTERNATIVE

Note: This measure will be considered in addition to the standard college and career readiness measure for schools classified as alternative. Non-alternative schools may include this measure as a mission specific goal, in addition to the standard measures, if they feel this data would help the IPCSC understand their school’s academic outcomes.

C&C Readiness Rubric	
Exceeds Standard	The percentage of the not continuously enrolled students who were enrolled for at least 45 days and were eligible to graduate in the same academic year (plus summer) who graduated is more than 10% above the school’s percentage in the previous year, <b>OR</b> The percentage in the current year is greater than 75%.
Meets Standard	<b>The percentage of the not continuously enrolled students who were enrolled for at least 45 days and were eligible to graduate in the same academic year (plus summer) who graduated is equal to OR Up to 10% greater than the school’s percentage in the previous year.</b>
Approaches Standard	The percentage of the not continuously enrolled students who were enrolled for at least 45 days and were eligible to graduate in the same academic year (plus summer) who graduated is below, but no more than 10% below the school’s percentage in the previous year.
Does Not Meet Standard	The percentage of the not continuously enrolled students who were enrolled for at least 45 days and were eligible to graduate in the same academic year (plus summer) who graduated is more than 10% below the school’s percentage in the previous year.

# OPERATIONAL MEASURES

## BOARD STEWARDSHIP

1. Governance Structure
2. Governance Oversight
3. Governance Compliance

## OPERATIONAL MANAGEMENT

4. Student Services
5. Data Security and Information Transparency
6. Facility and Services
7. Operational Compliance

# BOARD GOVERNANCE

## 1. Governance Structure Rubric

**Data Sources:** Board bylaws, articles of incorporation, and any courtesy letters or notifications issued to the school by entities responsible for oversight or enforcement.

Governance Structure Rubric	
Exceeds Standard	The school has met standard for 3 or more consecutive years, including the most recently completed school year.
Meets Standard	<ul style="list-style-type: none"> <li>• <b>Board Bylaws are compliant with ID law.</b></li> <li>• <b>Articles of Incorporation are current.</b></li> <li>• <b>No investigations were conducted into either ethical behavior or conflict of interest regarding any board director.</b></li> <li>• <b>The board did not experience an Open Meeting Law violation that needed to be cured this year.</b></li> </ul>
Approaches Standard	The school was informed of or became aware of non-compliance and action to correct the issue was taken within 30 days.
Does Not Meet Standard	The school was informed of or became aware of non-compliance and action to correct the issue was not taken within 30 days.

## 2. Governance Oversight Rubric

**Data Sources:** Board meeting minutes, school policies, continuous improvement plan (or other strategic planning evidence if submitted by the school), and verification of submission of annual administrator evaluation.

Governance Oversight Rubric	
Exceeds Standard	The school has met standard for 3 or more consecutive years, including the most recently completed school year.
Meets Standard	<ul style="list-style-type: none"> <li>• <b>The board reviews academic data in a timely and thorough manner.</b></li> <li>• <b>The board reviews financial reports in a timely and thorough manner.</b></li> <li>• <b>The board maintains compliant policies.</b></li> <li>• <b>The board engages in strategic planning.</b></li> <li>• <b>The board conducts a compliant annual evaluation of their school leader and/or management organization.</b></li> </ul>
Approaches Standard	The school was informed of or became aware of non-compliance and action to correct the issue was taken within 30 days.
Does Not Meet Standard	The school was informed of or became aware of non-compliance and action to correct the issue was not taken within 30 days.

### 3. Governance Compliance Rubric

**Data Sources:** If applicable, courtesy letters/notifications of concerns, investigation, or findings issued to the school by entities responsible for oversight or enforcement, and any documentation of correction provided by the school.

<b>Governance Compliance Rubric</b>	
Exceeds Standard	The school has met standard for 3 or more consecutive years, including the most recently completed school year.
<b>Meets Standard</b>	<b>The IPCSC did not issue any courtesy letters or notify an external investigative body of compliance concerns this year.</b>
Approaches Standard	The school was informed of or became aware of non-compliance and action to correct the issue was taken within 30 days.
Does Not Meet Standard	The school was informed of or became aware of non-compliance and action to correct the issue was not taken within 30 days.

# OPERATIONAL MANAGEMENT

## 4. Student Services Rubric

**Data Sources:** If applicable, any notifications or courtesy letters issued by the SDE or SBOE which required corrective action with regard to the school's ELL, SPED, or College and Career Readiness programs, as well as any documentation submitted by the school evidencing correction.

Student Services Rubric	
Exceeds Standard	The school has met standard for 3 or more consecutive years, including the most recently completed school year.
Meets Standard	<b>All of the following are true:</b> <ul style="list-style-type: none"><li>• <b>The school's English Language Learner program is in good standing;</b></li><li>• <b>The school's Special Education program is in good standing; The school's college and career readiness program is in good standing; and</b></li><li>• <b>The school's federal programs are in good standing.</b></li></ul>
Approaches Standard	The school was informed of or became aware of non-compliance and action to correct the issue was taken within 30 days.
Does Not Meet Standard	The school was informed of or became aware of non-compliance and action to correct the issue was not taken within 30 days.

## 5. Data Security and Information Transparency Rubric

**Data Sources:** periodic desk audit of school website, and any formal notifications regarding data security or public records compliance.

Data Security and Information Transparency Rubric	
Exceeds Standard	The school has met standard for 3 or more consecutive years, including the most recently completed school year.
Meets Standard	<ul style="list-style-type: none"> <li>• <b>The school's website is compliant with I.C. 33-133(7) (data collection, access, and security policy); I.C. 33-320 (continuous improvement plan); and I.C. 33-357 (expenditures updated monthly, contracts, performance reports, and annual budgets).</b></li> <li>• <b>The school did not experience any issues involving data security this year.</b></li> <li>• <b>The school did not experience any compliance issue regarding public records requests this year.</b></li> </ul>
Approaches Standard	The school was informed of or became aware of non-compliance and action to correct the issue was taken within 30 days.
Does Not Meet Standard	The school was informed of or became aware of non-compliance and action to correct the issue was not taken within 30 days.

## 6. Facility and Services Rubric

**Data Sources:** Verification of meal service program and transportation services via public documents and/or school website, and any notifications of concerns regarding occupancy or safety issued to the school by entities responsible for oversight or enforcement.

Facility and Building Services Rubric	
Exceeds Standard	The school has met standard for 3 or more consecutive years, including the most recently completed school year.
Meets Standard	<ul style="list-style-type: none"> <li>• <b>The school's occupancy certificate is current.</b></li> <li>• <b>The school maintains current safety inspections and drills.</b></li> <li>• <b>The school provides daily transportation to students in compliance with Idaho Code. The school provides a compliant lunch program.</b></li> </ul>
Approaches Standard	The school was informed of or became aware of non-compliance and action to correct the issue was taken within 30 days.
Does Not Meet Standard	The school was informed of or became aware of non-compliance and action to correct the issue was not taken within 30 days.

## 7. Operational Compliance Rubric

**Data Sources:** Periodic observation of enrollment lottery, and if applicable, any corrective action plans issued by the SDE not related to special education, ELL, or college and career readiness (as these are captured elsewhere), or formal notification of late reports or enrollment violations.

Operational Compliance Rubric	
Exceeds Standard	The school has met standard for 3 or more consecutive years, including the most recently completed school year.
<b>Meets Standard</b>	<ul style="list-style-type: none"><li>• <b>Required reports are submitted accurately and on time.</b></li><li>• <b>The school maintains a compliant enrollment process.</b></li><li>• <b>No correct action plans were issued by the SDE this year.</b></li></ul>
Approaches Standard	The school was informed of or became aware of non-compliance and action to correct the issue was taken within 30 days.
Does Not Meet Standard	The school was informed of or became aware of non-compliance and action to correct the issue was not taken within 30 days.

# FINANCIAL MEASURES

## NEAR TERM HEALTH

### 1. Default



## 1. Default

Calculation: No calculation.

Data Source: Annual Fiscal Audit Report, Terms of Debt, Other Formal Notifications Received by School.

Default Rubric	
Exceeds Standard	The school has met standard for at least 3 consecutive years, including the most recently completed school year.
Meets Standard	<b>The school is not in default of any financial obligations and did not experience any instances of default during the fiscal year.</b> <b>Financial obligations include, but are not limited to, making payments to vendors and utility services on time, complying with all loan covenants, filing any reports required for maintenance of grants or philanthropic funds, meeting all tax obligations, and operating without financial judgements or property liens.</b>
Approaches Standard	The school experienced one or more instances of minor default during the fiscal year (such as making late payments); however, the school is not currently in default of any financial obligations.
Does Not Meet Standard	School is currently in default of financial obligations.



## PERFORMANCE FRAMEWORK GUIDANCE: ALTERNATIVE MEASURES

*Adopted 8/13/2020*

*Revised 4/14/2022*

Idaho Public Charter School Commission

514 W Jefferson, Suite 303

Boise, Idaho 83720

Phone: (208)332-1561

[pcsc@osbe.idaho.gov](mailto:pcsc@osbe.idaho.gov)

Alan Reed, Chairman

Jenn Thompson, Director

# ADDITIONAL ACADEMIC MEASURES FOR ALTERNATIVE PROGRAMS GRADES 6-12

## Standard Academic Measures

1. Math Proficiency
2. ELA Proficiency
3. College and Career Readiness (5yr ACGR)

In addition to the standard measures above, the following measures will apply to alternative programs.

## Alternative Program Measures

1. Math Content Mastery
2. ELA Content Mastery
3. Progress Toward Graduation
4. College and Career Readiness- Alternative

In order to be considered an alternative program, 100% of the students enrolled in the program must meet the statutory definition of “at-risk”.

**Comparison Group:** the comparison group for alternative programs includes all schools and IPCSC programs serving 100% at-risk student populations.

## MATH PROFICIENCY (Standard Measure)

**Proficiency Rate:** The IPCSC will use the proficiency rates as determined by the Idaho Accountability Framework and reported via the Idaho Report Card.

Math and ELA Proficiency Rubric	
Exceeds Standard	The school's proficiency rate is greater than one standard deviation above the mean of the identified comparison group, <b>OR</b> The school's proficiency average is in 90 <sup>th</sup> percentile of all Idaho schools.
Meets Standard	<b>The school's proficiency rate is equal to the mean or falls between the mean and one standard deviation above the mean of the identified comparison group.</b>
Approaches Standard	The school's proficiency rate falls between the mean and one standard deviation below the mean of the identified comparison group.
Does Not Meet Standard	The school's proficiency rate is more than one standard deviation below the mean of the identified comparison group, <b>OR</b> the school has been identified for comprehensive or targeted support for three consecutive years as per the Idaho Consolidated Plan.

## MATH CONTENT MASTERY ALTERNATIVE

Note: This measure will be considered in addition to the standard proficiency measure for schools classified as alternative. Non-alternative schools may include this measure as a mission specific goal, in addition to the standard measures, if they feel this data would help the IPCSC understand their school's academic outcomes.

Idaho graduation requirements only require math to be taken in three of the four years of high school. Alternative schools structure this requirement differently. For the purposes of this measure, the total number of continuously enrolled students will exclude students enrolled in a grade for which the school does not require math to be taken.

Alt Proficiency Rubric	
Exceeds Standard	The percentage of continuously enrolled students who have either already completed all ELA/Math graduation requirements or successfully earned credit for the equivalent of 1 year of instruction in the discipline (ELA or Math) is more than 10% above the school's percentage in the previous year, <b>OR</b> The percentage in the current year is greater than 80%.
Meets Standard	<b>The percentage of continuously enrolled students who have either already completed all ELA/Math graduation requirements OR Successfully earned credit for the equivalent of 1 year of instruction in the discipline (ELA or Math) is equal to or up to 10% greater than the school's percentage in the previous year.</b>
Approaches Standard	The percentage of continuously enrolled students who have either already completed all ELA/Math graduation requirements <b>OR</b> Successfully earned credit for the equivalent of 1 year of instruction in the discipline (ELA or Math) is below, but no more than 10% below, the school's percentage in the previous year.
Does Not Meet Standard	The percentage of continuously enrolled students who have either already completed all ELA/Math graduation requirements <b>OR</b> Successfully earned credit for the equivalent of 1 year of instruction in the discipline (ELA or Math) is more than 10% below the school's percentage in the previous year.

## ELA PROFICIENCY (Standard Measure)

**Proficiency Rate:** The IPCSC will use the proficiency rates as determined by the Idaho Accountability Framework and reported via the Idaho Report Card.

Math and ELA Proficiency Rubric	
Exceeds Standard	The school's proficiency rate is greater than one standard deviation above the mean of the identified comparison group, <b>OR</b> The school's proficiency average is in 90 <sup>th</sup> percentile of all Idaho schools.
Meets Standard	<b>The school's proficiency rate is equal to the mean OR Falls between the mean and one standard deviation above the mean of the identified comparison group.</b>
Approaches Standard	The school's proficiency rate falls between the mean and one standard deviation below the mean of the identified comparison group.
Does Not Meet Standard	The school's proficiency rate is more than one standard deviation below the mean of the identified comparison group, <b>OR</b> the school has been identified for comprehensive or targeted support for three consecutive years as per the Idaho Consolidated Plan.

## ELA CONTENT MASTERY ALTERNATIVE

Note: This measure will be considered in addition to the standard proficiency measure for schools classified as alternative. Non-alternative schools may include this measure as a mission specific goal, in addition to the standard measures, if they feel this data would help the IPCSC understand their school's academic outcomes.

Alt Proficiency Rubric	
Exceeds Standard	The percentage of continuously enrolled students who have either already completed all ELA/Math graduation requirements or successfully earned credit for the equivalent of 1 year of instruction in the discipline (ELA or Math) is more than 10% above the school's percentage in the previous year, <b>OR</b> The percentage in the current year is greater than 80%.
Meets Standard	<b>The percentage of continuously enrolled students who have either already completed all ELA/Math graduation requirements OR Successfully earned credit for the equivalent of 1 year of instruction in the discipline (ELA or Math) is equal to or up to 10% greater than the school's percentage in the previous year.</b>
Approaches Standard	The percentage of continuously enrolled students who have either already completed all ELA/Math graduation requirements <b>OR</b> successfully earned credit for the equivalent of 1 year of instruction in the discipline (ELA or Math) is below, but no more than 10% below, the school's percentage in the previous year.
Does Not Meet Standard	The percentage of continuously enrolled students who have either already completed all ELA/Math graduation requirements <b>OR</b> Successfully earned credit for the equivalent of 1 year of instruction in the discipline (ELA or Math) is more than 10% below the school's percentage in the previous year.

## 9-12 PROGRESS TOWARD GRADUATION ALTERNATIVE

Note: This measure will be considered in addition to the standard growth measure for schools classified as alternative. Non-alternative schools may include this measure as a mission specific goal, in addition to the standard measures, if they feel this data would help the IPCSC understand their school's academic outcomes.

For the purpose of this measure, a quarter of instructional enrollment will be calculated based on the number of instructional days reported and may be further modified by mutual agreement of the school and the IPCSC based on the alternative school's course completion structure.

Alt Growth Rubric	
Exceeds Standard	More than 75% of students enrolled in the alternative program earned 2.9 credits for every instructional quarter for which the student was enrolled for 90% of the days in that instructional quarter.
Meets Standard	Between 65% and 75% of students enrolled in the alternative program earned 2.9 credits for every instructional quarter for which the student was enrolled for 90% of the days in that instructional quarter falls, <b>OR</b> his percentage is less than 65% BUT at least 5% greater than in the previous year.
Approaches Standard	Less than 65% of students enrolled in the alternative program earned 2.9 credits for every instructional quarter for which the student was enrolled for 90% of the days in that instructional quarter AND this percentage is between 3% and 5% greater than the previous year.
Does Not Meet Standard	Less than 65% of students enrolled in the alternative program earned 2.9 credits for every instructional quarter for which the student was enrolled for 90% of the days in that instructional quarter AND this percentage is less than 3% greater than in the previous year.



## COLLEGE AND CAREER READINESS (Standard Measure)

**Adjusted Cohort Graduation Rate (ACGR):** Alternative schools will be evaluated based on their 5-Year ACGR. All other schools will be evaluated based on their 4-Year ACGR.

**Graduation Rate:** The IPCSC will use the 5-Year ACGR as determined by the Idaho Accountability Framework and reported via the Idaho Report Card.

<b>C&amp;C Readiness Rubric</b>	
Exceeds Standard	The school's 5-Year ACGR is greater than one standard deviation above the identified comparison group, <b>OR</b> The school's ACGR is 90%.
<b>Meets Standard</b>	<b>The school's 5-Year ACGR is equal to the mean OR Falls between the mean and one standard deviation above the mean of the identified comparison group.</b>
Approaches Standard	The school's 5-Year ACGR falls between the mean and one standard deviation below the mean of the identified comparison group.
Does Not Meet Standard	The school's 5-Year ACGR is more than one standard deviation below the identified comparison group.

## COLLEGE AND CAREER READINESS – ALTERNATIVE

Note: This measure will be considered in addition to the standard college and career readiness measure for schools classified as alternative. Non-alternative schools may include this measure as a mission specific goal, in addition to the standard measures, if they feel this data would help the IPCSC understand their school’s academic outcomes.

<b>C&amp;C Readiness Rubric</b>	
Exceeds Standard	The percentage of the not continuously enrolled students who were enrolled for at least 45 days and were eligible to graduate in the same academic year (plus summer) who graduated is more than 10% above the school’s percentage in the previous year, <b>OR</b> The percentage in the current year is greater than 75%.
Meets Standard	<b>The percentage of the not continuously enrolled students who were enrolled for at least 45 days and were eligible to graduate in the same academic year (plus summer) who graduated is equal to OR Up to 10% greater than the school’s percentage in the previous year.</b>
Approaches Standard	The percentage of the not continuously enrolled students who were enrolled for at least 45 days and were eligible to graduate in the same academic year (plus summer) who graduated is below, but no more than 10% below the school’s percentage in the previous year.
Does Not Meet Standard	The percentage of the not continuously enrolled students who were enrolled for at least 45 days and were eligible to graduate in the same academic year (plus summer) who graduated is more than 10% below the school’s percentage in the previous year.

## Appendix B: Charter



**IDAHO**  
VIRTUAL ACADEMY

# **Charter School Application Idaho Virtual Academy**

A Online Public Virtual Charter School

BEFORE THE IDAHO STATE BOARD OF EDUCATION  
CHARTER COMMISSION\*

Amended

Originally approved by Butte County School District Board of Trustees,  
April 17, 2002.

Approved by Charter Commission on October 28, 2004

Approved as amended June, 2005

Approved as amended March 20, 2007

Approved as amended September 16, 2008

Approved as amended August 17, 2010

**Approved as amended October 14, 2014**

Submitted By:

The Board of The Idaho Virtual Academy  
1965 S. Eagle Road, Suite 190  
Meridian, Idaho

“The issue before us now is how to make good on the Internet’s power for learning and how to  
move from promise to practice.”

From: The Report of the Web-Based Education Committee to the President and Congress of the United States

## Executive Summary

**Commission Application.** The Idaho Virtual Academy (IDVA) is presenting this Charter Petition to the Commission seeking to update the Charter as originally approved by the Butte School District No. 111 and thereafter transferred to the Idaho Public Charter School Commission. Due to the statewide nature of the school and its status as a Local Education Agency (LEA) status, we believe it is appropriate for the Commission to act as authorizing entity IDVA. **(See Appendix for petition signatures and for Tracking Form Approval Documentation.)**

**Mission and Purpose.** IDVA aims to empower students throughout Idaho with an innovative and effective educational program. The school seeks to develop those qualities of mind and character that will help students become active, thoughtful, and responsible citizens. Furthermore, it aims to help students meet high expectations by offering an individualized, rigorous, self-paced, and mastery-based instructional program that incorporates significant parental involvement. This is accomplished through an innovative Internet/Online learning program that connects students, parents, and teachers in a 21<sup>st</sup> century learning community. A research-based curriculum developed by k12 Inc. is used to prepare Idaho students to meet the educational goals of the school. The self-paced nature of the program means that gifted students can dig deeply into the rich curriculum, while students having difficulty can spend more time attaining mastery. The k12-developed lesson plans and curriculum-based assessments guarantee consistent quality access for all students. **(See Appendix for Accreditation Documentation.)**

**Board of Directors.** IDVA is a public charter school managed by a non-profit corporation under the Idaho Nonprofit Corporation Act and the Idaho Charter Schools Act. The Board of Directors control and govern the operations of the school and are comprised of individuals throughout the state of Idaho. These individuals are leaders in business, government, and their local community and include parents of students who attend IDVA. The Board conducts regular, special and annual meetings in compliance with provisions of the Idaho Code. The Board is actively involved with k12 Inc. in the selection of administrative personnel who work with the school under the Service Agreement between IDVA and k12 Inc. and has approved of the selection of administrative personnel. The Board is responsible for the selection and adoption of the educational program of the school, as well as the approval/disapproval of recommendations brought to the Board for personnel, programs, policies, and procedures of the school. Pursuant to policy, a member of the Board personally reviews the invoices of IDVA for accuracy prior to approval of payment. Subcommittees of the Board have been established to address various programs and activities of the school. IDVA's Board follows all provisions of the Open Meetings Law of the State of Idaho and maintains minutes of all Board meetings; these minutes are available for public inspection and/or copying, as are all other documents encompassed under the public records laws of the State of Idaho. **(See Appendix for Articles of Incorporation and Amended ByLaws.)**

**Type of School.** IDVA is a statewide virtual public charter school created under the laws of the State of Idaho. This charter program has been in continual operation since the initial approval of the Charter by the Butte County School District No. 111. The school has never been involved in the conversion or replacement of any existing school.

**Educational Program.** The IDVA curriculum is provided by k12 Inc. under the control and supervision of the IDVA Board. The curriculum is aligned with the Idaho State Standards. This dynamic curriculum includes an online school component as well as student work performed away from the computer using books, workbooks, a phonics program, math manipulatives science and musical equipment, and other materials that are shipped directly to the student. Idaho-certified teachers oversee the learning of each child in their class by reviewing student work for quality, accuracy, and understanding; by accessing students' online academic records (including daily lessons and assessments); and by communicating directly with the student and family on a regular basis. Teachers also grade student work and are available during school hours via phone or e-mail when students (or adults) have questions. *(See Appendix for Curriculum and Standards Alignment and information regarding k12.)*

Notwithstanding the virtual purpose and operation of the school, IDVA may engage in professional technical programs, either individually or as part of a consortium or organization of other public schools providing virtual technical education, in any and all modes of provision of educational services, including but not limited to virtual education, hybrid model of education and/or traditional school building/classroom setting. This exception to the traditional educational program is in recognition that varying professional technical programs may best be supplemented through a component involving hands on education.

**Staff and Administrative Composition.** Administrative services are provided to IDVA through a Service Agreement between IDVA and k12, Inc. IDVA Board members are actively involved in the selection and evaluation of administrative personnel for the school. Certified staff will be employed through the use of contracts and in accordance with Idaho statute. School personnel are required to hold the appropriate Idaho teaching certifications and endorsements. IDVA teachers hold highly qualified status under No Child Left Behind Act (NCLB) or are working towards this status on an approved program of instruction.

**School Facility and Attendance Area.** The school's main administrative office is headquartered in Meridian, Idaho. Administrators, teachers and satellite offices/testing centers are located throughout the state. The location of satellite offices during any given school year is dependent upon administrator locations and student geographical data. In most cases, teachers work from their homes and travel throughout their geographical region to provide educational services to their assigned students. The school's attendance area is the State of Idaho.

**Grade Levels and Projected Enrollment.** For the 2006-2007 school year, IDVA will be serving students in grades K-10. Through the discretion of the Board of IDVA, as granted by the Idaho Public Charter School Commission, the school has expanded the program to serve grades K-12,.

**Funding Sources.** Basic funding for the school is provided as available under the Idaho Code as well as through federal funding programs. IDVA also seeks funding to support educational programs from private entities, individuals and governmental programs.

**Food Services.** As a public virtual charter school, food services are not applicable to this program.

**Contract Services.** As identified above, a Service Agreement exists between IDVA and k12 for the provision of administrative services, curriculum and materials, and technology services. This Agreement has been amended from time to time, as necessary.

**Budget and Fiscal Issues.** The IDVA Board approves a balanced budget prior to the beginning of each school year. Budgetary and financial documentation is provided on an annual basis.

# Table of Contents

<i>Executive Summary</i> .....	2
<i>I. Mission and Vision</i> .....	7
<i>II. Educational Program and Philosophy</i> .....	7
<i>A. Improving Learning and Increasing Opportunities</i> .....	7
<i>B. Innovative Teaching Methods</i> .....	8
<i>C. Performance-Based Accountability</i> .....	9
<i>III. Goals</i> .....	10
<i>A. Academic Goals:</i> .....	10
<i>B. Non-Academic Goals:</i> .....	10
<i>IV. Curriculum and Delivery</i> .....	12
<i>V. Instruction</i> .....	13
<i>VI. Assessment</i> .....	15
<i>A. State Testing System</i> .....	15
<i>B. Idaho Virtual Academy Assessment System</i> .....	15
<i>VII. Health &amp; Safety</i> .....	16
<i>VIII. Governance</i> .....	17
<i>IX. Parent Involvement</i> .....	19
<i>X. Personnel</i> .....	20
<i>Statutory requirements of staff</i> .....	20
<i>Employee benefits</i> .....	20
<i>Transfer rights</i> .....	21
<i>Collective bargaining</i> .....	21
<i>XI. Students</i> .....	22
<i>A. Admission policy</i> .....	22
<i>B. Special Education, At-risk, and Students with Disabilities</i> .....	22
<i>C. Gifted and Talented Students</i> .....	23
<i>D. Limited English Proficiency Students</i> .....	23
<i>E. Dual Enrollment</i> .....	23
<i>F. Student Discipline Policy</i> .....	23
<i>G. Advertisement of Student Enrollment Opportunities</i> .....	28



<i>H. Professional Technical Educational Opportunities .....</i>	<i>28</i>
<i>XII. Chartering Entity Relations.....</i>	<i>29</i>
<i>XIII. Operation and Potential Liability.....</i>	<i>30</i>
<i>XIV. Facility and Equipment .....</i>	<i>31</i>
<i>XV. Annual Audit of Programmatic and Financial Records/ Financial Management.....</i>	<i>32</i>
<i>A. Financial Management and Financial Records.....</i>	<i>32</i>
<i>B. Financial Audit .....</i>	<i>32</i>
<i>C. Performance Audit.....</i>	<i>32</i>
<i>XVI. Administrative Audit .....</i>	<i>33</i>
<i>XVII. Statistical Reporting to Commission.....</i>	<i>34</i>
<i>XVII. Two Year Alternative Hybrid-Virtual Pilot Program.....</i>	<i>35</i>
<i>Facility Location - Hours of Provision of Instruction .....</i>	<i>35</i>
<i>Student Enrollment and Students Served .....</i>	<i>35</i>
<i>Purpose - Course Offerings and Instruction .....</i>	<i>36</i>
<i>Staffing.....</i>	<i>37</i>

## I. **Mission and Vision**

### **Mission Statement**

***The Idaho Virtual Academy will empower students of all abilities to achieve excellence in a wide range of academic areas. Highly qualified educators will work alongside Learning Coaches to equip students for the demands and opportunities of the 21st century by providing and supporting a research-based, differentiated, effective and rigorous curriculum.***

### **Vision Statement**

**Empowering students, teacher and parents today with the tools of tomorrow.**

## II. **Educational Program and Philosophy**

An educated person in the 21st century needs to have a solid understanding of fundamental concepts from the core academic subjects. Tomorrow's educated person will also need additional skills and knowledge beyond the core subjects. The school intends to educate students in grades K - 12 throughout Idaho. Our approach is to employ research-based lessons fused to a technologically sophisticated delivery system.

The Idaho Virtual Academy is built upon the premise that, given a comprehensive and mastery-based curriculum, high expectations, technology, strong instructional support, a significant amount of off-line work, guidance from experienced teachers, and a strong commitment from parents (or other caring adults), a well-conceived virtual education program can foster measurable student achievement, serve the unique needs of students and families, and offer a new choice for public education in the 21st century.

### **A. Improving Learning and Increasing Opportunities**

Our academic objective is to improve student achievement. IDVA's educational program is rooted in developing reading, writing, mathematical, and critical-thinking skills through content-rich materials.

#### **Research-Based Approach**

At IDVA we use methods and curricula that are backed by research: phonics for reading, basic math facts early, hands-on learning, plenty of "read aloud" and written work for younger children, and more. We also embrace promising new approaches (for example,

adaptive learning via the Web), and we emphasize using multimedia technology (e.g., Flash animation with video and audio plug-ins) in innovative ways. The curriculum we have chosen, k12, has been and continues to be developed and reviewed by recognized leaders in their fields.

Parental involvement is another proven method that distinguishes our program. When parents become active and informed partners in their child's education, test scores rise, drop-out rates fall, and the active pursuit of learning becomes a compelling focus for each family.

The k12 curriculum is standards-based and is designed to meet or exceed the Idaho state standards. A detailed table illustrating the alignment of k12's curriculum with Idaho's standards in has been provided to the Commission and will continue to be provided as each grade level is added. Curriculum for each added successive school year has been provided upon completion.

#### Special Education Student/Section 504/ADA

The Academy will comply with the Individuals with Disabilities in Education Act ("IDEA"), Section 504 of the Rehabilitation Act ("Section 504"), and the Americans with Disabilities Act ("ADA"). The Academy shall be solely responsible for compliance with Section 504 and the ADA. The Academy has worked diligently to ensure full compliance with the IDEA. As an LEA, IDVA will be responsible for assuring compliance with these programs.

The Academy shall comply with all applicable federal law in regard to services and the education of Limited English Proficient (LEP) students. The Academy has developed and implemented policies and procedures for the provision of, services to ELL students in accordance with guidance published by the Office for Civil Rights of the U.S. Department of Education. These policies and procedures ensure the following:

- Identify students who need assistance;
- Develop a program that in the view of experts in the field, has a reasonable chance for success;
- Ensure that necessary staff, curricular materials and facilities are in place and used properly;
- Develop appropriate evaluation standards, including program exit criteria, for measuring the progress of students, and assess the success of the program and modify it where needed.

## **B. Innovative Teaching Methods**

In the IDVA model, an experienced and certified teacher serves as mentor and team leader to parent team members. Our teachers are charged with overseeing content

coverage and ensuring proper delivery of the instructional system. Our teachers assist both responsible adults and students with curriculum questions. They also provide instructional assistance and make suggestions about employing a variety of learning strategies. As a first priority, teachers are assigned geographically to their students and then on a space-available status. Teachers are available by phone, e-mail, and in-person visits to ensure that each child is progressing towards his or her individual goals. Teachers provide direct instruction to students through the use of the web conferencing tool, Elluminate. IDVA Teachers also conduct face-to-face instructional workshops in mathematics and writing for parents and students. Teachers may conduct a virtual class relating to a specific lesson or subject matter through the use of Elluminate.

Parents (or other responsible adults) guide children through the daily lessons and help ensure that students are learning. Parents also communicate regularly with teachers and help students manage their time. Attendance logs are maintained to track the minutes and hours of student attendance to meet the school's attendance requirements.

Though our delivery of material is unique, our approach to pedagogy is not. To accommodate the diverse learning styles of children, we employ a variety of teaching strategies, including individualized direct instruction or direct instruction through Elluminate, hands-on exploration, use of manipulatives, practice exercises, and "distributed review"--a method of including previous lesson material in a current lesson for the purpose of reinforcing and reviewing the content.

The IDVA program includes detailed instructional guides, clear and intuitive presentation of lessons, a comprehensive on-line help system, technical support, optional challenge problems, and secondary lessons in some subjects.

By setting goals, collecting and grading assignments, giving support and advice, and drawing on their years of experience and training, teachers work to ensure student success. Through the use of ongoing lesson and unit assessments, combined with portfolios and anecdotal records, teachers are intimately familiar with each student's progress.

### **C. Performance-Based Accountability**

IDVA uses technology to alter the typical school day and school year—to change the dynamics of time and learning as well as what is measured and how it is measured.

Students progress through the curriculum at the pace that meets their individual needs. Mastering curriculum early allows students to move ahead and those who need extra time or remediation are able to work at an individualized pace.

Our approach is to focus on measuring *learning*. The Internet- student learning system measures "positive attendance" (i.e., time spent on task)—and allows us to measure learning (as evidenced by mastery of our daily assessments) in "real time." Since IDVA

is a mastery-based program, we continually assess student progress through the curriculum via lesson-, unit-, and semester assessments.

Each student's level of achievement is assessed on a daily basis, according to explicit and measurable achievement standards, dictated by the k12 curriculum.

## **I. Alternative School Program**

Alternative secondary educational programs as defined in the state of Idaho are those programs that provide instructional courses and offer special services to eligible at-risk youth to earn credits toward graduation and enable such students to attain a high school diploma.

IDVA, like many school districts, is faced with a distinctive population of students who are challenged to be successful within the designated educational framework of the district. This population has necessitated the establishment of an alternative secondary schooling program within IDVA. IDVA's alternative school program (Vision) may serve grades 6-12.

Our Alternative School Program is differentiated from our regular school program through the following:

### **Curriculum and Instruction**

- a. Curriculum is provided and supported by K12.
- b. Block system instead of semester system; students take up to two classes at a time for one credit each.
- c. Vision will offer a summer school session.
- d. Teachers have modified the curriculum and aligned it to the state standards. Teachers have completed curriculum maps to focus on the pace of the course and to allow students more time to focus on the essential standards.
- e. Students can earn additional credits via credit recovery courses. The stipulation is they must be passing all current classes before adding a credit recovery course to their schedule.
- f. Students have mandatory live classes along with additional mandatory live small group (Tier II) classes based on assessment/classroom data.

### **Culture**

- a. Monthly school assemblies are held to celebrate student accomplishments.
- b. Students have the opportunity to graduate with honors.
- c. Students are supported by a team that consists of dedicated Teachers, a Student Support Advisor, a Counselor, a Master Teacher, a School Social Worker, an Assistant Principal, and a Principal.

### III. Goals

The IDVA Board, administration, and teaching staff share a vision for student success that is measurable and meaningful. We view it as our responsibility to educate the whole child, and feel that the tools for success lie in a strong foundation in academic content. Therefore, we will have both academic goals and non-academic goals, as outlined below. These goals are subject to modification from time to time by the IDVA Board, with approval by the Charter Commission.

#### A. Academic Goals:

- (1) Students will demonstrate mastery of a curriculum that meets the Idaho Achievement standards and Idaho Graduation Requirements.
- (2) Students will demonstrate their mastery through a variety of measures including participation in the state testing program, curriculum based assessments and conferences with their teachers.
- (2) Students will demonstrate strong proficiency in language arts.
- (3) Students will demonstrate strong proficiency in mathematics.
- (4) Students will develop a strong foundation of knowledge, facts, and skills in History, Geography, Civics, Science, Art, Music, Economics, and other disciplines.
- (5) Students will develop critical reasoning and higher-order thinking skills.
- (6) Students will prepare for a rigorous post-secondary education.
- (7) Students will acquire skills in both art and music as part of their aesthetic development.

#### B. Non-Academic Goals:

Our primary non-academic goal is to develop those qualities of mind and character that will help students become active, thoughtful, and responsible citizens. Our choice of materials and approach are designed to communicate and build commonly shared values such as honesty, integrity, courage, discipline, compassion, respect for others, and appreciation of the work ethic.

- (1) Through the Curriculum and Educational Program:
  - (a) Students will be responsible for the improvement of their school and local community.

- (b) Students will develop important personal traits such as honesty, courage, loyalty, personal responsibility, perseverance, respect for others, and diligence.
  - (c) Students will develop effective work habits and skills that will prepare them for the demands of school, society, business, government, and civic affairs.
  - (d) Students will rise to meet high expectations of behavior and performance.
  - (e) Students will learn habits of healthy living.
- (2) Students will be expected to complete a senior project approved by the designated School Administrator.
  - (3) School Clubs and Organizations will be encouraged to participate in a community service project.

## IV. Curriculum and Delivery

As stated in the Executive Summary, the IDVA virtual charter educational program entails work online but also individual student work away from the computer using books, workbooks, a phonics program, math manipulatives, science and musical equipment, and additional curricular materials (all of which are shipped directly to every family enrolling a student in the school). Lessons have teaching components, practice components, assessments, and optional challenge programs. The self-paced nature of the program allows students to progress at their individual abilities.

Idaho-certified teachers oversee the learning of each student in their class by reviewing student work for quality, accuracy, and understanding; accessing their online academic records and communicating with the student and/or parent (or other responsible adult) on a regular basis at teacher conferences. Teachers grade student work and are available daily via phone or e-mail. Teachers primarily work from their homes. The school administration maintains a Main Office in Boise and satellite offices.

Notwithstanding the virtual purpose and operation of the school, IDVA may engage in professional technical programs, either individually or as part of a consortium or organization of other public schools providing virtual technical education, in any and all modes of provision of educational services, including but not limited to virtual education, hybrid model of education and/or traditional school building/classroom setting. This exception to the traditional educational program is in recognition that varying professional technical programs may best be supplemented through a component involving hands on education.

A detailed version of our curriculum can be obtained upon request to the school's main office.



## V. Instruction

IDVA will continue to meet the standards and goals set forth by the Idaho Department of Education, as they are adopted and/or amended. IDVA has adopted the Idaho High School Graduation Requirements as a minimum expectation for high school students.

### A Complete Education Foundation

**IDVA has a complete curriculum program that meets Idaho's Academic Standards and the subject-area standards. This program includes:**

- **Internal Assessments and Individualized Placement:** Internal assessments are built into the on-line components of the school's academic program. These assessments are an integral part of instruction, including initial placement assessments in reading and math to discover the child's current level of competence. Regular assessment (integrated into the lessons) allows us to monitor and foster each child's progress.
- **Mathematics:** IDVA's Math program balances mastery of fundamental skills with critical thinking and problem-solving. The Math program emphasizes an active, multi-sensory approach to ensure that students understand the concrete realities that underlie mathematical concepts. Regular practice and review ensure mastery of basic skills. Online games and animations motivate students and help illustrate concepts, while challenge problems help develop critical-thinking skills.
- **Language Arts:** IDVA's Language Arts/English program builds important reading and writing skills while inspiring a love of literature. Combining Phonics, Literature, Language Skills, and Spelling lessons, the Language Arts/English program emphasizes classic works, teaches writing as a process, and prepares students for standardized tests in language skills and reading comprehension.
- **History:** IDVA's History program, with integrated topics in Geography and Civics, opens young minds and imaginations to far-off lands, distant times, and diverse people. The program emphasizes the *story* in History—a story that includes not only great men and women but also everyday people. The kindergarten History program takes students on a world tour of the seven continents, and provides an overview of American History through a series of biographies of famous Americans. The History program in grades 1-4 tells the story of civilization from the Stone Age to the Space Age. Older students explore major themes and topics in greater depth through a pair of two-year survey courses, one on World History and the other on American History.
- **Science:** IDVA's Science program balances hands-on experience with systematic study of scientific terms and concepts. Students perform many experiments to help them understand scientific principles, and receive guided instruction in important scientific concepts. Exploring life, earth, and physical sciences in each grade, the

science program nurtures curiosity, analytical skills, and an appreciation of how the world is shaped by ongoing scientific and technological advances.

- **Art:** Following the timelines in the History lessons, Art lessons introduce students to great works of art from different cultures and eras, while engaging them in creative activity—painting, drawing, molding with clay, and so on. Students learn to recognize artistic techniques and elements of design, express informed opinions about specific pieces, and develop an appreciation for great works of art.
- **Music:** IDVA's Music program is set up as a successive series of programs. Assuming no prior musical training, the lessons help students learn about and appreciate music, from singing and dancing to learning about rhythm and playing the recorder.
- **Health, Safety, and Physical Education:** Instruction in health, safety, and physical education program is also offered as part of the IDVA curriculum

Each full-time enrolled student is provided access to a computer system (including computer, printer, software, and ISP connection) and various instructional materials (including books, workbooks, science lab equipment, etc.) from the school to support the learning process. These computer systems and printed materials are the property of K12, Inc, and must be returned when the student leaves the school. Each IDVA-provided computer is equipped with a filtering system and each parent must sign an Agreement for Acceptable Use of Technology Policy as it relates to computer content and software. The school provides technical support and troubleshooting for these systems. Computer systems will be upgraded and replaced as needed. Broadband Internet access is made available to families.

## VI. Assessment

### A. State Testing System

The Academy, as required by law, participates in the state-testing program, including the ISAT and IRI. The School complies with all testing requirements of the state. The data generated from these assessments is used by the Academy as a factor in determining the progress students are making towards meeting the Idaho Achievement Standards. This data is also used by the school to determine areas of curriculum and program improvement.

### B. Idaho Virtual Academy Assessment System

The Academy assesses student performance in all subject areas with our own internal assessment system designed to determine how students are meeting the specific goals of the curriculum. These assessments also help the Academy to improve the learning program by providing information on the effectiveness of instructional activities.

The Academy assessment system consists of the following:

#### Lesson Assessments

In Math, Science, Art, Music, and History, every lesson is followed by a brief assessment. In Language Arts, there are assessments after every grammar, usage, mechanics, and composition lesson. Guided reading has lesson assessments every few days, and spelling and phonics offer assessments after every fifth lesson. These assessments show whether the student has achieved the objectives for that lesson, or whether a review of some, or all, of the lesson is advisable.

#### Unit and Semester Assessments

In many subjects, the student takes an assessment at the end of a unit. These assessments show whether or not the student has retained key learning objectives for the unit. There are similar semester assessments, with equivalent purposes, in the middle and at the end of a year's worth of content for many subjects. The results of the semester and unit assessments can be used to guide review or additional practice.

The Academy also has a system of qualitative evaluation. At least every two weeks, teachers have conferences (by phone/email) with students and/or parents to review progress and set goals. Each semester, students will be assigned a progress report, reflecting their completed work, their progress toward stated goals, and results from all quantitative assessments. Both quantitative and qualitative information are considered in assigning grades and recommending promotion for individual students.

## **VII. Health & Safety**

IDVA operates a virtual education program. As typically there is no traditional classroom setting, many of the issues of health and safety become the responsibility of the parent in the home.

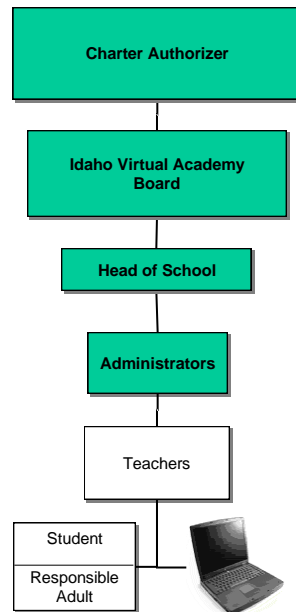
Administrative offices and other facilities are in compliance with all required federal, state and local regulations as required for public schools.

Parents are expected to demonstrate that their children obtain proper immunizations upon admission according to Idaho Statutes (39-4801). Immunization forms and other pertinent medical records are kept (confidentially) by the school administration.

Conduct criminal history checks for all employees in compliance with Idaho Code 33-130.

Additional policies and procedures are implemented by the Board, as needed.

## VIII. Governance



The Academy is a nonprofit corporation pursuant to Idaho law. The school is governed pursuant to the ByLaws adopted by the Incorporators and subsequently amended pursuant to the amendment process specified in the ByLaws.

The Board consists of at least five individuals from Idaho who are leaders in their communities across multiple sectors (public, private, non-profit). Some members of the Board are parents of students enrolled in IDVA. The Board meets regularly to oversee the management, operation, activities, and affairs of the school. The Board defines, composes, and revises (as needed) the policies of IDVA and ensures compliance with its charter agreement and applicable laws and regulations.

IDVA Directors do not receive compensation for their service as Board members, and may resign at any time by giving appropriate written notice. Directors may be removed, for cause, by an affirmative vote of two-thirds of the remaining members of the Board. Unless notice is waived by the director, any director facing possible removal must be provided with written notice of the intent to hold a vote on possible director removal seven (7) days prior to the date that the matter will be voted upon. The Board Chairperson will use revised Robert's Rules of Order as deemed necessary. The Board will set its own threshold for minimum Board attendance policies as well as possible sanctions for repeated or habitual unexcused non-attendance.

The IDVA Board of Directors shall be considered the Board of Directors for purposes of the nonprofit corporation. The Board of Directors will elect the officers of the corporation and determine the duration of their term(s). The Board of Directors will govern in accordance with the Articles of Incorporation and the Amended By-Laws of Idaho Virtual Academy, Inc. (See **Appendix** for a copy of the Articles of Incorporation and By-Laws, as amended.)

All meetings of the Board of Directors for the Academy are held in accordance with open meetings laws.

The Board, at its discretion, may vote to expand its membership and/or create subcommittees. Specific responsibilities of the Board are defined in the By-Laws.

This charter is a grant of authority approved by the Commission to the Board of Directors of the Academy pursuant to 33-502A(2), Idaho Code.

## IX. Parent Involvement

Parents are actively encouraged to work with the school and parent organizations including:

- Board of Directors, and
- Community/Parent Teacher Advisory Board or other *ad hoc* committees
- Family informational sessions
- Student outings and field trips
- Student community service projects

### Parent Involvement in School Affairs

Parents provide feedback regarding the school's program each year through meetings and surveys. Experienced IDVA families serve as mentors to new families.

Parents are trained on the IDVA instructional system. Parents are taught how to be effective instructional coaches, under the guidance of qualified and certified teachers.

## **X. Personnel**

The staffing plans for IDVA will change each year depending upon the needs of the school.

### **Statutory Requirements of Staff:**

The Academy will meet, or exceed, at the discretion of the Governing Board, Idaho Code for statutory requirements:

- a. Criminal background checks (I.C. 33-130)
- b. Non-discriminatory hiring and dismissal policies (Section 504 of Rehab. Act)
- c. Discipline of classified and certificated personnel (I.C. 33-513(5))
- d. A grievance procedure for certificated and noncertificated personnel (I.C. 33-517)
- e. Provision for sick and other leave (I.C. 33-1216)
- f. The accumulation of unused sick leave and transfer (I.C. 33-1217)
- g. Sick leave allowance at retirement (I.C. 33-1228)
- h. Released time for service on state committees and commissions (I.C. 33-1279)
- i. Employment on a contract; to be delivered within time lines given in the Idaho Code.
- j. Withholding the salary of any certificated employee not holding a valid Idaho certificate (I.C. 33-513(1))
- k. Endorsement of certificates by employing school organizations (I.C. 33-1207)
- l. Annual contract issuance requirements for certificated employees (I.C. 33-514)
- m. Renewable contract evaluation and recommendation requirements (I.C. 33-515)
- n. Hiring and evaluation of noncertificated personnel (I.C. 33-517)
- o. Health insurance provision available for noncertificated personnel (I.C. 33-517A)
- p. Proper provisions for personnel files (I.C. 33-518)
- q. All employees will be covered by the Idaho public employees retirement system, federal social security, unemployment insurance and worker's compensation insurance (I.C. 33-5205(3)(k))
- r. Teachers and administrators employed by IDVA will be employed on a written contract in a form approved by the state superintendent of public instruction, conditioned upon a valid certificate being held by such professional personnel at the time of entering upon their duties as required by statute.

### **Employee Benefits**

All staff members of the Charter School are covered by the public employee retirement system (PERSI), federal social security, unemployment insurance, and worker's compensations insurance.



### **Transfer Rights**

Due to the fact that IDVA is chartered under the Charter Commission, transfer rights of teachers to a chartering school district are not clear. However, IDVA would allow a teacher to transfer within the geographical parameters of the statewide program provided by IDVA.

### **Collective Bargaining**

The staff of the Charter School shall be considered a separate unit for the purposes of collective bargaining.

## XI. Students

### A. Admission policy

**The Academy is nonsectarian in its programs, admission policies, employment practices, and all other operations. As a public charter school we do not charge tuition. Additionally, the Academy does not discriminate against any applicant for admission on the basis of ethnicity, national origin, gender, disability, religion, intellectual or athletic ability, or proficiency in the English language.**

#### Enrollment, Over-Enrollment and Student Registration

Enrollment will be reviewed and determined annually, with an enrollment cap to be determined by the Board. Registration applications for new students will be accepted during the enrollment season with the likelihood that the majority of students applying for admission will be admitted, provided that this amount is not in excess of the caps provided by Idaho Code for virtual school growth. In the event that projected enrollment demands exceed curriculum level capacity for the next school term, a lottery process will be implemented to fairly allocate class vacancies.

Currently enrolled students and their siblings will maintain a preferred status unless they express an interest to withdraw. Re-enrollment forms shall be presented to each registered student in the spring of the current school year. Those discontinuing their studies shall not have a reserved position in the next curriculum level. The forms for re-enrollment must be signed and returned in compliance with the process and procedure that has been established by the school's administration, with consideration and approval by the Board. Failure to respond in the time provided shall constitute a waiver of any interest in application or enrollment renewal for the following term.

#### Lottery

IDVA will conduct a lottery according to the requirements as set out in 33-5205, Idaho Code, as well as any rule adopted by the State Board of Education or State Charter Commission that is applicable to student lotteries held by public charter schools.

### B. Special Education, At-risk, and Students with Disabilities

Students with disabilities will be served according to federal and state laws regarding special education, including but not limited to Section 504 of the Rehabilitation Act (Section 504), the Americans with Disabilities Act (ADA), the Individuals with Disabilities Education Act (IDEA), and other applicable legislation. IDVA has a nondiscrimination policy with regard to admissions.

Students with disabilities will be served in accordance with their Individualized Education Programs (IEPs). All IEP's will be developed in accordance with all applicable laws and regulations.

## Assurances

The Academy will adhere to all provisions of federal law relating to students with disabilities, including the IDEA, Section 504 of the Rehabilitation Act of 1974, and Title II of the Americans with Disabilities Act of 1990, that are applicable to it.

The Academy will, consistent with applicable law, work to ensure that all students with disabilities that qualify under the IDEA:

- Have available a free appropriate public education (FAPE)
- Are appropriately evaluated
- Receive an appropriate education in the least restrictive environment (LRE)
- Are involved in the development of and decisions regarding the IEP, along with their parents
- Have access to appropriate procedures and mechanisms, along with their parents, to resolve any disputes or disagreements related to the school's or school district's provision of FAPE

### **C. Gifted and Talented Students**

The Academy shall identify and provide services to students who possess demonstrated or potential abilities that give evidence of high-performing capabilities. The Academy will utilize eligibility criteria developed by the Idaho Department of Education. The identification system will align with the Gifted and Talented rules and regulations as identified by IDAPA.

### **D. Limited English Proficiency Students**

As a public school, the Academy will comply with Idaho Code in the identification and education of English Language Learners.

### **E. Dual Enrollment**

IDVA students may participate in dual enrollment as provided in the Idaho Code and IDVA policy.

### **F. Student Discipline Policy**

IDVA operates a virtual educational program. In this setting, many of the issues of student behavior and discipline addressed by a traditional brick and mortar school become the responsibility of the parent as such events are occurring in the home setting.

IDVA as a public school adheres to all federal, state laws and regulations as well as school approved policies and procedures (Code of Conduct) relating to student discipline and the required reports and actions for disciplinary infractions by its students. IDVA complies with all requirements of due process for student disciplinary violations including provisions for notice, fair procedures and a fair hearing.

Administrative disciplinary actions may include, but are not necessarily limited to the following consequences:

- Student conference with Head of School / teacher
- Group conference that may involve student, parent, teacher, and Head of School
- Counseling
- Loss of school privileges

A student cannot be suspended or expelled and thereby deprived of a free education provided in the public schools without due process. Due process requirements guarantee all students the right to fair notice, fair procedures, and a fair hearing. The student and his or her parent or guardians have the responsibility to follow the procedures set forth herein in a respectful and timely fashion.

A student who is accused of misbehavior or a breach of the Code of Student Conduct will be presented to the Head of School or designee by the person having knowledge of the misbehavior or breach of conduct.

- A. **Written Referral:** Violations shall be presented in written form and should be specific, indicating the breach of the Code of Student Conduct for which the referral is being issued.
- B. **Student Notification:** The student will be placed on notice of the violation by the Head of School or designee and afforded an opportunity to explain.
- C. **Initial Conference:** An initial conference (in person or by tele- or video-conference) shall be conducted by the Head of School or designee at each level of discipline.
  - a. **Charges and Evidence:** The Head of School or designee shall confer with the student, explain the charges and evidence against the student, and allow the student an opportunity to present his or her side of the story prior to taking disciplinary action.
  - b. **Parental Assistance:** A good faith effort shall be made by the Head of School or designee to employ parental assistance or other alternative measures prior to suspension, except in the case of emergency or disruptive conditions that require immediate suspension or in the case of a serious breach of conduct.

**D. Parental Notification:**

- a. **By Telephone or E-mail:** The Head of School or designee shall make a good faith effort to notify the parent by telephone or e-mail of the student's misconduct and the proposed disciplinary action.
- b. **By Written Notice:** Regardless of whether there has been communication with the student's parent by telephone, the Head of School or designee shall, within twenty-four (24) hours of taking disciplinary action, send written notice to the parent describing the disciplinary action imposed and the reason the action was taken.

**Violations Leading to Suspension:**

The following violations will lead to short-term suspension or other low-level disciplinary action, following the appropriate due-process procedures. Multiple violations at this level may lead to expulsion. [Note: We take the below violations very seriously but in a virtual environment we expect that many of these violations will be a lot less likely to occur.]

Abusive language or conduct: A student who uses or engages in abusive, profane, obscene or vulgar language or conduct in the presence of another person, whether in person or electronically, is guilty of unacceptable conduct.

Cheating: A student who participates in using, copying or providing another student with any test answers or answer keys or another person's work, representing it to be their own work, is guilty of unacceptable conduct.

Disruptive behavior and/or minor infractions: A student who engages in unacceptable behavior or conduct that is disruptive to the educational process, but is not considered a serious breach of conduct, or who violates school rules and policies determined by the Head of School to be minor in nature, is guilty of unacceptable conduct.

Unauthorized access: A student who enters part of the school website that has been denied to them by administrators will be in violation of the school's Technology Use Policy.

False information: A student who knowingly and intentionally reports or gives false or misleading information, either oral or written, which may injure another person's character or reputation or disrupt the orderly process of the school is guilty of a serious breach of conduct.

Interference with the educational process: A student who is guilty of willful disobedience, open defiance of authority of the Head of School or any member of the school staff, violence against persons or property, or any other act that substantially disrupts the orderly conduct of the school is guilty of a serious breach of conduct.

Vandalism: A student who intentionally destroys damages or defaces records or property (whether physical or electronic) owned by or in the possession of the Board or other members of the district staff, is guilty of a serious breach of conduct.

Theft: A student who takes from another person money or other property (whether physical or electronic) belonging to the other person with the intent to permanently deprive the victim of such property is guilty of a serious breach of conduct that may be reported to the proper law enforcement agency.

Robbery: A student who takes money or other property (whether physical or electronic) belonging to another person from another person by the use of force, violence, assault, or threatened use of force or violence is guilty of a serious breach of conduct that may be reported to the proper law enforcement agency.

Sexual Harassment: A student who subjects another person to unwelcome sexual advances, verbal harassment or abuse, pressure for sexual activity, repeated remarks with sexual or demeaning implications, unwelcome or inappropriate touching, or suggestions or demands for sexual involvement accompanied by implied or explicit threats – either in person or on-line – is guilty of a serious breach of conduct. This also includes transmission of sexually inappropriate or explicit material.

Indecent exposure or conduct: A student who exposes or exhibits his or her sexual organs in the presence of others in a lewd or indecent manner, or who intentionally and willingly engages in behavior that is considered lewd, indecent or obscene, either in person or on-line, is guilty of a serious breach of conduct that may be reported to the proper law enforcement agency.

Burglary: A student who enters or remains in a building or property owned or maintained by the Board with the intent to commit theft, vandalism, or some other criminal offense therein, is guilty of burglary unless the premises at the time is open to the public or the student is legally authorized to enter or remain. However, the fact that the premises may be open to the public or that the student may be authorized to enter or remain will not excuse any other offense, violation or other breach of conduct committed by that student while therein. Burglary is a serious breach of conduct that may be reported to the proper law enforcement agency.

Abusive language or conduct directed at a school employee or trustee: A student who uses or engages in abusive, profane, obscene, or other vulgar language or conduct directed at a school employee or trustee is guilty of a serious breach of conduct.

Truancy: A student who is truant from school is guilty of a serious breach of conduct.

## **Violations leading to Expulsion**

The following violations will lead to expulsion, following the appropriate due process procedures.

Weapons: A student who displays or is in possession of an object normally considered a weapon (other than a firearm), such as a knife or club, while attending a school-sponsored activity away from home is guilty of a serious breach of conduct.

Firearms: A firearm is any weapon (including a starter gun, pellet gun, B-B gun, air rifle, or air pistol) that will, or is designed to, or may readily be converted to expel a projectile by the action of an explosive or compressed or forced air. It is the expressed policy of the Board that, with the exception of law enforcement officers, no person shall have in his or her possession any firearm of any nature, including a firearm used for recreational activities, while on a school campus, or other property owned or maintained by the Board, or property designated for school activities.

Battery: A student who intentionally strikes another person against the will of the other person is guilty of a serious breach of conduct that may be reported to the proper law enforcement agency.

Bomb and explosive: A student who is in possession of a bomb, explosive device, or substance or materials intended for use in a bomb or explosive device or substance while at a school-sponsored activity, on Board property, or a chartered bus (unless the material or device is being used as part of a legitimate school-related activity or science project conducted under the supervision of an instructor with the knowledge and consent of the Head of School) is guilty of a serious breach of conduct.

Arson: A student who willfully, by fire or explosion, damages or attempts to damage any building, structure, vehicle or other property owned or maintained by the Board is guilty of a serious breach of conduct that may be reported to the proper law enforcement agency.

Threat: A student who intentionally threatens, by words or act, to strike or cause bodily harm to another person, has the apparent ability to carry out such threat, and causes the other person to have a well-founded fear that he or she is about to be struck or about to suffer such bodily harm is guilty of a serious breach of conduct that may be reported to the proper law enforcement agency.

Internet Use: Any student who abuses the Acceptable Use Policy (included separately) shall be dealt with according to the parameters of the use policy.

Truancy: A student who is habitually truant from school is guilty of a serious breach of conduct.

Alcohol, drugs or drug paraphernalia: A student who possesses or attempts to distribute alcohol, drugs or drug paraphernalia during school-related events or on school site will be in serious breach of IDVA conduct.

## **G. Advertisement of Student Enrollment Opportunities**

IDVA's virtual educational program will continue to seek students from the various geographical regions of the state of Idaho.

IDVA prepares and mails out informational materials regarding their school program. Further, IDVA holds informational sessions in various regions throughout the state to promote the school program. The school maintains a website addressing their educational program, and enrollment opportunities regarding the school.

## **H. Professional Technical Educational Opportunities**

IDVA recognizes that a significant component of the student body will express and interest in and seek out opportunities to participate in professional technical educational opportunities.

IDVA will seek to provide professional technical educational opportunities to IDVA secondary students, either through their own individually developed educational program and/or in combination with other public educational entities (Idaho Public School Districts and/or other Idaho Public Charter Schools) in regional areas. IDVA recognizes the challenges in providing such educational opportunities in a solely virtual setting. While recognizing that some professional technical programs fit within a solely virtual setting, the school also recognizes that some programs will necessitate a hybrid of virtual education and hands on educational experiences while others may involve solely hands on educational format. For such reason, IDVA recognizes an exception to the traditional virtual educational model of IDVA for the possible provision of professional technical educational services.

Curriculum and details of program offerings, which may change from time to time depending upon student interest and the school's needs, will be provided to the Commission.



## **XII. Chartering Entity Relations**

The Public Charter School Commission and the Idaho Virtual Academy will resolve disputes relating to the provisions of the charter following the procedures set forth in 33-5209, Idaho Code, and the applicable rules of the State Board of Education for notice of defect and submission or a corrective action plan.

### **XIII. Operation and Potential Liability**

Upon approval of the initial charter with the Butte County Joint School District 111, the Governing Board of the Academy obtained incorporation as a nonprofit public school, listing the IDVA Board as having the responsibilities and liabilities for the operation of the school. The Articles of Incorporation and Amended By-Laws serve as the policy manual for how the Academy operates.

The Academy operates independently as a Local Education Agency (LEA). The Academy is responsible for its own operation including personnel matters, preparation of a budget, and contracting for services. The Academy maintains a policy of general liability insurance and all other types of insurance necessary to provide coverage for the potential losses described in this paragraph.

The policy of insurance shall have limits of liability not less than that required pursuant to the Idaho Code and shall list the Chartering Entity as an additional insured.

IDVA can sue, be sued, purchase, receive, hold, and convey real and personal property for school purposes, and can borrow money for such purposes.

The Academy's employees, director, and officers shall enjoy the same immunities as employees, director, and officers of public school districts and other public schools.

Pursuant to 33-5204(2), Idaho Code, the Commission shall have no liability for the acts, omissions, debts or other obligations of the Academy. The Academy will defend, hold harmless and indemnify the Chartering Entity against any claim, action, loss, damage, or injury. Liability cost or expense of any kind or nature arising out of the operation of the Academy and/or arising out of the acts or omissions of the agents, employees, invitees, or contractors of the school.

Copies of insurance binders from a company authorized to do business in Idaho for liability insurance (per occurrence and aggregate coverage), property insurance, worker's compensation insurance, unemployment insurance, and any other insurance will be provided to the Commission upon request. All required insurance will be in effect during the operation of the Academy.

#### **XIV. Facility and Equipment**

The administration building(s) will be properly licensed and compliant with code with regard to the Americans with Disabilities Act, all OSHA regulations and with all applicable Idaho laws. The building will provide sufficient wiring and communication capabilities to support the high-tech nature and infrastructure of the school. The building will also provide adequate heating, ventilation, lighting, sanitary conditions, and water supply to support the school's administrative staff.

## **XV. Annual Audit of Programmatic and Financial Records/ Financial Management**

### **A. Financial Management and Financial Records**

The Academy's annual budget will be prepared in compliance with all statutes and rules of the State of Idaho including requirements for a public hearing and delivery to the State Department of Education. Copies of the Budget will be provided to the Commission upon Board approval and delivery to the State Department of Education. All Accounting records will be established and maintained in accordance with accounting principles generally accepted in the United States. In addition, the Academy will follow all requirements and regulations as may be set forth from time to time by the State Board of Education and State Department of Education. The Academy operates through funding provided by the State of Idaho and the Federal government. The Academy will continue to seek out private grants and donations to supplement the school's funding. All k12 invoices of the Academy are independently reviewed by a Board member prior to submission to the Board for approval. A separate Board motion is made to address K12 invoices, separate and apart from any other invoices to the school. A detailed report as to the financial status of the Academy and its Budget, including a detailed cash distribution report, is provided at each monthly regular meeting of the Board.

### **B. Financial Audit**

An audit of the School's financial statements is performed annually by an independent Certified Public Accountant. The audit reports, accompanied by the related financial statements are submitted yearly to the Commission pursuant to the requirements of section 33-701(6) & (7), Idaho Code.

### **C. Performance Audit**

Programmatic outcomes are composed of goals for student learning, student attendance, and other objectives described in this application as well as those requirements set forth by the Idaho Charter School Commission. Annually, the school will report in detail its performance against these programmatic objectives, describe deficiencies in performance, and set forth corrective actions for remedying these deficiencies. Additionally, the school will comply with any other requirements that the state might specify at a later point. IDVA has received and will maintain accreditation.

Reports from audit activities will be provided to the Commission staff in the same manner and to the same extent as other documentation and reports provided to Commission staff.

## **XVI. Administrative Audit**

The Board will arrange for the completion of an independent audit process as to various components of the administrative and educational services of IDVA. Reports will be provided to the Board upon the completion of these independent audits.

## **XVII. Statistical Reporting to Commission**

Any statistical reports that are filed by IDVA with the State Department of Education shall also be filed with the Commission. Such Commission filing shall coincide with the timing of filings with the State Department.

## **XVIII. Two Year Alternative Hybrid-Virtual Pilot Program**

Commencing with the 2010-2011 school year, IDVA will commence a two (2) year pilot program for the development and operation of an Alternative Hybrid Component, within the existing Virtual Charter School.

This program will follow and meet all requirements for Alternative Secondary Programs as provided by IDAPA 08.02.03.110, as issued by the State Board of Education and as may be amended from time to time.

### **Facility Location – Hours of Provision of Instruction:**

The location of the Alternative Program will be in a nearby facility, located at 1965 S. Eagle Road, Suite 160, Meridian, Idaho, 83642.

This is a location separate from the regular high school (which is a virtual home-based program) and is at a physical location separate from the Administrative Offices of the Idaho Virtual Academy.

The hours of this program are at hours different from that of the rest of the program. The hours of instruction will be as follows:

7-8 grade program: 8:30-11:30 a.m., Tuesday-Friday

9-12 grade program: 1:00-4:00 p.m., Tuesday-Friday

### **Student Enrollment and Students Served:**

Alternative secondary educational programs as defined in the state of Idaho are those programs that provide special instructional courses and offer special services to eligible at-risk youth to earn credits toward graduation and enable such students to attain a high school diploma.

Students to be Served:

At risk youth are served in this program. The definition of at risk secondary students (in grades 7 through 12) will encompass a student who meets any of the three following criteria in listing “a” through “f” or any of the one criteria in “g” through “m”.

- a. Has repeated at least one grade;
- b. Has absenteeism that is greater than ten percent (10%) during the preceding semester;
- c. Has an overall grade point average that is less than 1.4 (on 4.0 scale) prior to enrolling in the alternative secondary program;
- d. Has failed one or more academic subjects;
- e. Is two or more semester credits per year behind the rate required to graduate;
- f. Is a limited English proficient student who has not been in a program more than three years;
- g. Has substance abuse behavior;
- h. Is pregnant or a parent;
- i. Is an emancipated youth;
- j. Is a previous dropout;
- k. Has serious personal, emotional, or medical problems;
- l. Is a court or agency referral;
- m. Upon recommendation of the school district as determined by locally developed criteria for disruptive student behavior.

**Anticipated Initial Enrollment:**

For the first year of the pilot program, student enrollment is anticipated to be 150 students, comprised of students in the following grade levels:

7th	25 students
8th	25 students
9th	25 students
10th	25 students
11th	25 students
12th	25 students

**Purpose – Course offerings and Instruction:**

The purpose of this program will to meet the state-approved vocational technical component of education with offering a Work Experience Course under the supervision of a state certified Work Based Learning Coordinator as well as using k12 developed and provided courses in Business, Entrepreneurship, Marketing, Service Learning and Technology. These course offerings may expand during the course of the program pilot. It is also the intention to have the Achieving your College and Career Goals Course.



Graduation credit may be earned in the following areas:

- Academic Subjects
- Electives
- Approved work-based learning experiences

Non-academic courses i.e., classroom and office aides do not qualify for credits unless such is specifically approved as work-based learning experiences.

Instruction and special services as mandated by the IDAPA rules for Alternative Secondary Education and applicable to the designed program will be compiled with.

**Staffing:**

IDVA's current employment rolls already include a certificated professional educator holding certification as a Work Based Learning Coordinator as well as a certificated employee holding a vocational-technical teaching certificate.

As career counseling and emotional issues are at serious play for Alternative School Programs, IDVA will initially assign a .50 counselor to the program. This counselor already has alternative school program experience. The school's existing employed psychologist will also provide support services to the program.

Any and all other positions necessitated by this program will be provided by highly qualified and properly endorsed personnel.

## Appendix C: IPCSC Closure Protocol



## Closure Protocol

Idaho Public Charter School Commission

514 West Jefferson Street, Ste. 303

Boise, Idaho 83702

208-332-1561

[pcsc@osbe.idaho.gov](mailto:pcsc@osbe.idaho.gov)

Alan Reed, Chairman

## Purpose

This document provides guidance on the public charter school closure process.

## Authority

Title 33, Chapter 52 of Idaho Code, known as the Charter School Act provides for public charter school operations based on a contractual agreement between a charter school board of directors and a state authorized chartering entity, such as the Idaho Public Charter School Commission (IPCSC).

Operating contracts, known as Performance Certificates are granted by state authorized chartering entities to the governing board of a non-profit corporation that serves as the charter holder. Performance certificates are limited to five-year terms.

Closure protocol is enacted when:

- an authorized chartering entity chooses to non-renew a school's charter pursuant to I.C. § 33-5209B;
- an authorized chartering entity chooses to exercise its right to revoke a charter pursuant to I.C. § 33-5209C; or
- a charter holder chooses to relinquish its charter by approval of a resolution.

Each authorized chartering entity is required to maintain a closure protocol and is tasked with oversight of the closure process.

If closure is due to an IPCSC nonrenewal or revocation decision, written notice will be issued to the school within 14 days of the decision and this closure protocol must begin within 5 days.

## Roles

**Authorizer:** the authorized chartering entity is responsible to maintain closure protocol and to oversee the closure process.

**Charter Holder:** the charter holder is responsible to ensure that all closure tasks are complete and all deadlines are met. The school is responsible for any and all costs associated with closure.

## Note

Please note that every closure situation is different. This guidance document may need to be expanded or adjusted to accommodate the specifics of a particular closure.

# Contents

- I. Closure Protocol Team..... 4
  - A. Initial Meeting..... 4
  - B. Team Members..... 4
  - C. Subcommittees ..... 4
  - D. Meeting Agenda..... 5
  - E. Important Dates..... 5
  
- II. Communication..... 6
  - A. Initial Stakeholder Notification ..... 6
  - B. Staff Meeting ..... 7
  - C. Ongoing Communication ..... 9
  
- III. Financial Dissolution ..... 9
  - A. Expenses..... 9
  - B. Accounting of Assets..... 11
  - C. Dissolution of Assets ..... 11
  - D. Reporting..... 12
  
- IV – Records Management..... 12
  - A. Records Retention Procedures ..... 12
  - B. Records to be Retained..... 13
  
- V. Governing Board ..... 15
  - C. Final dissolution ..... 15
  - B. Claims against a dissolved Corporation ..... 16
  - C. Reporting..... 17
  
- VI. Final Closure Report Outline ..... 17
  - A. Cover Sheet ..... 17
  - B. Required Attachments, Redacted ..... 18

## I. Closure Protocol Team

### A. Initial Meeting

within 5 business days of the date on which written notice of closure is issued, a meeting of the closure protocol team will be held.

### B. Team Members

The Closure Protocol Team shall meet at least once a month between the date of the decision to non-renew, revoke, or relinquish the charter and the final dissolution of the board. Meetings shall be organized and chaired by the “team lead”. The team lead is also responsible for compiling meeting minutes and all documentation for the final closure report.

Required members of this team shall include:

1. The school’s Board Chair;
2. The school’s Lead Administrator;
3. The school’s Business Manager;
4. The IPCSC Director
5. A Team Lead (appointed by the IPCSC Director); and
6. The State Department of Education’s School Choice Coordinator.
7. Additional members may be added to the closure protocol team by mutual agreement of the required members.

### C. Subcommittees

1. Subcommittees shall be established for the purpose of managing closure tasks in the following areas:
  - i. Communication – student, teacher, family
  - ii. Financial – vendors and assets
  - iii. Business – employer and corporation
  - iv. Records – student and employee records

## D. Meeting Agenda

The meeting agenda for the initial meeting of the closure protocol team shall include the following:

1. Review of the closure protocol guidance document;
2. Review of the final closure report template;
3. Review the roles and responsibilities of each party and subcommittee throughout the process;
4. Assign liaisons from both the school and the IPCSC to the Closure Protocol Team and any subcommittees;
5. Establish due dates for all tasks listed in Section I.E of these procedures; and
6. Review notification letter drafted by IPCSC Staff.

## E. Important Dates

Due dates to be established at the initial meeting of the Closure Protocol Team shall include the following:

1. The date of the school's last allowable draw on public funds;
2. The date on which the school shall cease to provide services to students;
3. The date by which records to be retained beyond the closure date are to be transferred the authorizer;
4. The date by which all assets purchased with federal dollars must be transferred to the authorizer for redistribution to other charter schools;
5. the date on which all employee contracts are to be ended and all communication on behalf of the school must cease;
6. The date on which benefits will end;
7. The date by which the final audit must be completed;
8. The date by which all financial activity must be ended, including cutting the final checks and closing all bank accounts;

9. The date by which all W2s will be issued for the school's final operating year; and
10. The date by which the non-profit corporation must be dissolved.

## Communication

### A. Initial Stakeholder Notification

1. Within 7 business days of the date written notice of closure is issued, the school is responsible to issue a letter (drafted by the IPCSC) notifying stakeholders of closure. This letter shall minimally include:
  - a. Where and when the final order will be posted online for transparency of the reasons for closure;
  - b. The last date of student services;
  - c. Transfer procedures;
  - d. Explanation of the appeal process and when a decision regarding an appeal would be published; and
  - e. Contact information for the school's administrator and the IPCSC.
2. The school may choose to include a supplemental letter drafted by the school's board, and if so, such draft must be provided to the IPCSC prior to distribution to stakeholders.
3. The school is responsible to distribute the IPCSC's letter (and the school board issued supplemental letter, if applicable) to the following recipients:
  - a. All Parents of current students and all parents currently on a waitlist;
  - b. All Teachers, Staff, and Volunteers;
  - c. All Vendors with whom the school has an active contract or has engaged with in the past 12 months;
  - d. All Lease and Loan/bond holders; and
  - e. Any Educational Services Providers with whom the school contracts.
4. The authorizer is responsible to issue a letter informing stakeholders of the closure situation to the following recipients:



- a. All potentially impacted school districts and charter schools;
  - b. The State Department of Education;
  - c. The State Board of Education;
  - d. The Office of the Governor;
  - e. The Public Employment Retirement Service of Idaho;
  - f. The chairpersons of the House and Senate Education committees; and
  - g. The Senators and Representatives serving the state legislature on behalf of the district in which the school maintains student occupied facilities or business offices.
5. Within 7 days of the date written notice of closure is issued, the IPCSC's letter informing stakeholders of the closure situation shall be posted in a prominent location on the school's website and the IPCSC's website.

## B. Staff Meeting

1. Within 7 days of the date written notice of closure is issued, the school's administrator, board chair, and business manager shall hold a meeting with all staff to discuss the following:
  - a. Media contact protocol  
The Director of the IPCSC is the authorized media contact for the IPCSC. The school is encouraged to establish a single point of contact to manage public relations on behalf of the school.
  - b. Maintenance of normalcy (to the best possible level) for students through the last day of student services  
All instructional and student services are required to be provided in full through the last day the school is allowed to provide such services. The student experience should remain as normal as possible through this process. It is recommended that the school provide guidance for teachers and staff early-on to ensure common language and tone is used when discussing this situation with students and families.
  - c. End of Employment Impact  
This date is established by the Closure Protocol Team. When determining the end of contract dates, please consider the impact of this date on health

insurance and PERSI. When at all possible, August 31<sup>st</sup> is recommended as this will allow teachers who re-employ at another school the best opportunity for uninterrupted health insurance coverage. However, this decision must be balanced with the urgency of the closure and the school's obligation to spend as little as necessary during the closure period.

2. The meeting agenda for this staff meeting should include the following:
  - a. Notification of closure timeline and timeline of parallel appeal if the school has chosen to or is considering appealing the closure decision.
  - b. Review of media protocol and how to discuss the issue with parents and students.
  - c. Date of last paychecks and whether/who will remain on staff after end of student services and end of contract dates.
  - d. Timeline for more information regarding sick leave, vacation time, and health insurance; Cobra may not be available when the charter school providing the original health insurance ceases to exist.
  - e. Timeline for more information regarding any impacts to PERSI; Employees whose last place of work prior to retirement was the school being closed may lose the ability to transfer accrued sick leave into funds used for medical coverage.
  - f. Timeline for winding-down and transition of duties, including, but not limited to facility access and security, access to email and software, hardware returns, and asset management of furniture, fixtures, equipment, and curriculum.
  - g. Social emotional services for staff and students if the school has chosen to make such available; We acknowledge that closure can be traumatic for staff and students. Schools are encouraged to consider making additional counseling services available.
  - h. Assistance with employment transition for staff (such as access to hiring fairs or letters of recommendation) if the school has chosen to make such available.

## C. Ongoing Communication

1. Additional communication with stakeholders will be necessary throughout the closure process.
2. The Communication subcommittee is responsible for ensuring that any necessary communication is timely and accurate.

## F. Financial Dissolution

### A. Expenses

1. Within 15 business days of the date on which written notification of closure was issued a meeting shall be held between the school's business manager, the IPCSC's Finance Manager, and the Team Lead.
2. Additional attendees (such as the school's auditor) may be invited to the meeting by mutual agreement of both required attendees. Any related costs are the responsibility of the school.
3. No later than the start of the scheduled meeting, the school's business manager shall make the following available to the IPCSC:
  - a. A list of every vendor the school has paid in the last 12 months;
  - b. A copy of all arrangements with vendors including: contracts, service agreements, grants, and/or MOUs with all services providers that are currently active or that have been active in the past 12 months;
  - c. A copy of all lease agreements and all long-term loans;
  - d. A list of all insurance policies held by the school (including liability, directors and officers, worker's comp, etc.), including company, policy number, and coverage specifics; and
  - e. All bank statements for the previous 12 months.
4. The meeting agenda for this meeting shall include the following:
  - a. A review of statute, rule, policy, and regulations related to closure as presented by the Closure Team Lead.  
This part of the discussion should consider requirements of the IRS, the Department

of Labor, the Government Accounting Standards Board, as well as the Idaho Charter School Act and rules and policy established by the State Board of Education and the State Department of Education.

- b. A review of projected cash flow through end of operations as presented by the school's Business Manager.  
There will be time to revise this initial projection as closure progresses, and the numbers are expected to shift throughout the process, but this exercise establishes a starting place. Please consider the last allowable draw of funds, payroll through end of contracts, and note that there may be additional closing costs, such as a PERSI buy out, storage costs, or penalties on early lease termination.
- c. Development of a plan for immediately reducing spending to necessities only, which may require board action to suspend or change policies to allow for changes in who has spending authority and at what amounts.
- d. Prioritization of payment of anticipated expenditures, pursuant to Idaho Code.
- e. Documentation of a list of items requiring follow-up and who is responsible for the workload or costs.
- f. Establishment of approximate deadlines for when each account is to be closed.

5. Following the initial meeting, the school's Business Manager shall be responsible to provide the following documentation:

- a. Verification that the school's account has been paid in full with each vendor as accounts are closed;
- b. Verification that the school has met with PERSI and has established a final transmission date;
- c. Documentation that any outstanding PERSI fees are paid;
- d. Verification that the school has met with the board approved auditor and has established a final audit timeline. Note that the timing of this audit may be later than usual; and
- e. Verification of end dates for leases and liability coverage (including property and directors/officers).

## B. Accounting of Assets

- i. The IPCSC shall provide to the school a written guidance document with regard to the sale and dissolution of assets.
- ii. The school shall be responsible to provide the IPCSC and the SDE with a full inventory of all physical assets owned by the corporation within 30 days of the date on which the notice of closure was issued.
- iii. The inventory shall include:
  - a. A description of the item;
  - b. The fund with which each item was purchased; and
  - c. An estimate of the current value of the item.
- D. The Team Lead, the IPCSC's Finance Manager, a representative from the SDE, and the school's Business Manager shall meet to review this inventory within 15 days of receipt of the inventory, and may verify accuracy via thorough on-site review.

## C. Dissolution of Assets

1. All viable special education testing materials shall be distributed to the SDE for redistribution to charter schools based on the agency's determination of need.
2. Property owned by the ESP will be claimed by the ESP. The lease by which this equipment was provided to the school must include an itemized inventory and shall be provided to the IPCSC.
3. Any items purchased with federal funds (excluding special education testing materials) shall be returned to the IPCSC for redistribution to other charter schools. The IPCSC shall retain record of what was received and to whom it was redistributed.
4. The school is responsible to arrange for delivery of assets in an organized and well-labeled manner.
5. All assets purchased with state funds shall be liquidated to the greatest degree possible. Please see the IPCSC's guidance on the sale and dissolution of assets for procedural expectations.
6. When all assets have been redistributed and liquidated, and all creditors have been paid, any remaining funds shall be returned to the Public School Income Fund via the State Department of Education.

## D. Reporting

1. The school shall ensure that an audit completed by an independent auditor is conducted, the audit report is approved by the school's board, and submitted to both the State Department of Education and the authorizer.
2. The school shall ensure that all documentation required to dissolve the school as a business is filed with the IRS, including dissolution of the 501c3.
3. After the sale of assets, and the all checks are cut, any remaining funds shall be returned to the State Department of Education for distribution to operational schools.
4. File final tax reports.
5. Issue W2s for previous tax year.

## IV – Records Management

### i. Records Retention Procedures

1. The school's Lead Administrator is responsible to ensure the proper retention and destruction of records in accordance with the State of Idaho's records retention schedule.
2. The public charter school shall make every effort to transfer all active student records (including the cumulative file and the special education file) to the student's next school of choice prior to the date on which records are scheduled to transfer to the authorizer.
3. The public charter school shall ensure that every student file (active or inactive) includes an official transcript (signed, embossed, etc.) or final report card and a record of where and when the student's records were transferred out of the public charter school's care. This information shall be compiled in a single spreadsheet.
4. The public charter school shall ensure that all records to be transferred to the authorizer (cumulative and special education) are scanned into an electronic format. Costs incurred are the responsibility of the school.

5. The public charter school shall ensure that all records are transferred to the authorizer via a secure file transfer protocol.
6. No employee or former employee of the school shall retain copies or have access to student, employee, or financial records after the employee's end of contract date.

## ii. Records to be Retained

### 1. Student Records:

- a. Student cumulative files shall be retained for five years beyond the student's exit date.
- b. Student special education files shall be retained for five years beyond the student's exit date.
- c. Official transcripts or final report cards for all students who attended the school shall be retained permanently and shall include the name and address of the student, the name of the student's parent(s)/guardian(s), the student's date of birth, the courses attempted by the student and grades earned by the student.
- d. Record of student records transfer shall be retained permanently;

### 2. Personnel Records:

- a. Personnel files shall be retained for five years beyond the employee's termination date.
- b. Personnel files shall include the name, address, and contact information of the employee; employment agreements or contracts signed by the employee, verification of certification (if applicable), and all employee evaluations. No other documentation shall be retained.

### 3. Financial Records:

- a. Monthly expenditure reports for the five years preceding the school's closure date shall be retained. Records shall be destroyed after five years.
- b. Monthly deposit records for the five years preceding the school's closure date. Records shall be destroyed after five years.
- c. All bids received and contracts awarded in the five years preceding the school's closure date. Records shall be destroyed after five years.

- d. Medicaid reimbursement records for seven years prior to the school's closure date. Records shall be destroyed after seven years.
  - e. Bank statements for all accounts for five years preceding the school's closure date. Records shall be destroyed after five years.
  - f. Tax documents shall be retained for the seven years prior to the school's closure date. These documents include but are not limited to IRS forms 941 and 1099. Records shall be destroyed after seven years.
  - g. Annual financial audit reports and annual board approved budgets shall be retained permanently for all operational years. These documents are submitted to the IPCSC annually, and may not need to be re-submitted.
4. Governance Records:
- a. All meeting agendas shall be retained permanently.
  - b. All meeting minutes shall be retained permanently.
  - c. A complete copy of the most recent set of board policy shall be retained permanently.
  - d. A copy of the board bylaws and articles of incorporation shall be retained permanently.
5. School Culture Records
- a. The school's lead administrator shall be responsible to make arrangements for the permanent retention of all school newspapers, yearbooks, and student handbooks through the Idaho Historical Society. The school is responsible for all costs incurred.
6. Records Requests After Closure
- a. The IPCSC shall manage records requests for student transcripts and for personnel files after the school has closed.
  - b. The school shall ensure that the school's URL redirects to the IPCSC's records request page for a minimum of 3 years after the school's closure, at the school's expense.



## V. Governing Board

### iii. Final dissolution

#### 1. Final Board Meeting

- a. In accordance with OML notice a final meeting of the governing board and pursuant to I.C. § 30-30-1001, a vote to dissolve a nonprofit corporation shall be properly noticed and accompanied by the dissolution plan. In this case, the dissolution plan is the closure protocol, which should be near completion by the time this motion is made. This section of Idaho Code also requires that the agenda state that the purpose, or one of the purposes, of the meeting is to consider a resolution to dissolve of the non-profit corporation.
- b. I.C. § 33-5212 addresses the order in which payments shall be made, and state that any remaining assets after all creditors have been paid shall be distributed to the Public School Income Fund. This information should be incorporated into the dissolution motion as it is required to be noticed by the Non-Profit Corporation Act.
- c. A vote in favor of dissolution passes with a majority vote of the board directors.
- d. A copy of the resolution must be provided to the IPCSC with 24 hours of the vote.

#### 2. Meeting Agenda

- a. Approval of the financial audit report (if not already complete).
- b. Approval of any final contracts to be paid (i.e. for the Business Manager to return at the end of the calendar year to prepare final tax documents and distribute to employees).
- c. Appointment of a designee to file dissolution of the school's 501c3 with the IRS and articles of dissolution with the Idaho Secretary of State.
- d. Appointment of a designee to complete any and all final activities that may be necessary.
- e. Signature of any final checks.

#### 3. Articles of Dissolution

- a. Pursuant to I.C. § 30-30-1003, after the dissolution has been authorized, a designee (identified in the dissolution plan) shall files articles of dissolution with the Idaho

Secretary of State. These articles shall minimally include:

- i. The name of the corporation;
  - ii. The date dissolution was authorized;
  - iii. A statement that dissolution was approved by a sufficient vote of the board.
- b. A corporation is effectively dissolved as of the date of its articles of dissolution.
  - c. The school shall provide a copy of the filed articles of dissolution to the IPCSC.
4. A dissolved corporation may continue its corporate existence but may not carry on any activities except those appropriate to wind up and liquidate its affairs.

## B. Claims against a dissolved Corporation

- iv. After the date on which the articles of dissolution are filed, the corporation may dispose of the known claims against it by sending written notice, pursuant to I.C. § 30-30-1005. Written notice must include:
  - a. A description of the information that must be included in a claim;
  - b. A mailing address where a claim may be sent;
  - c. The deadline, by which the dissolved corporation must receive the claim; and
  - d. State that the claim will be barred if not received by the deadline, which may not be fewer than one hundred twenty (120) days from the effective date of the written notice.
- v. The corporation must address any unknown claims against it by publishing a notice Pursuant to I.C. 30-30-1006. The notice must:
  1. Be published one (1) time in a newspaper of general circulation in the county where the dissolved corporation's principal office is or was located, or, if none in this state, in Ada county;
  2. Describe the information that must be included in a claim and provide a mailing address where the claim may be sent; and
  3. State that a claim against the corporation will be barred unless a proceeding to enforce the claim is commenced within five (5) years after publication of the notice.

- vi. Claims will be enforced if the corporation's assets have be distributed in liquidation to any party other than a creditor. A claim may be made by a creditor against the recipient, not to exceed the amount received by the recipient.

### C. Reporting

1. The school shall ensure that all state and federal reporting is complete prior to dissolution. Verification of completed reports shall be made by the IPCSC. Required reports include, but are not limited to the following:
  - a. ISEE final data upload including, but not limited to student, course, teachers, and financial data sets;
  - b. Federal programs final reporting;
  - c. Grant final reporting; and
  - d. The school shall ensure that dissolution of the charter holder's non-profit organization is filed with the secretary of state and shall provide the IPCSC with a copy of this filing;
2. The school shall ensure that the dissolution of the school's 501c3 is on file with the IRS and shall provide the IPCSC with a copy of this filing.

## VI. Final Closure Report Outline

Throughout the closure protocol process, the Closure Team Lead will collect the required documentation and build a final report. The final report will be permanently retained by IPCSC and posted on the IPCSC's website.

### i. Cover Sheet

1. A final closure report must include a cover sheet with the following information:
  - a. The legal name of the school;
  - b. The legal name of the charter holder;
  - c. The address(s) that the school occupied at time of closure;
  - d. Contact information for future questions;

- e. The following links and a statement that more information can be found at these locations,
  - i. [PCSC webpage for this school],
  - ii. [webpage for the meeting at which the charter was approved],
  - iii. [webpage for the meeting at which the charter was nonrenewed or revoked, if applicable], and
  - iv. [webpage for any related hearings]; and
- f. A description of where requests for student transcripts can be made after closure.
- g. A list of the complete closure protocol team.
- h. A list of the following key dates:
  - i. The date on which the charter was approved;
  - ii. The first and final dates on which the school was authorized to serve students;
  - iii. The date on which the school received its final distribution of state funding;
  - iv. The date on which teacher contracts ended; and
  - v. The date on which the charter holder's corporation was dissolved.

## B. Required Attachments, Redacted

1. Final IPCSC Closure Order
2. Final appeal decision (if applicable)
3. IPCSC Notification of Stakeholders Letter
4. List of all vendors, including the name and address of the vendor, a description of the services provided/purchased, and the date on which the IPCSC verified account closure.
5. A list of insurance coverages, including company and the last date of coverage (including health, liability, etc.)
6. A list of all contracts, service agreements, grants, and MOUs to be retained by the IPCSC, including verification of date received.
7. A list of all lease agreements and all long-term debt held by the school at the beginning of the closure protocol, including the company and amount.
8. Documentation of the termination of any leases or loans.
9. Final bank statements indicating account closure.

10. Expense reports for the 12 months preceding dissolution.
11. A copy of the final check cut to the SDE, if applicable.
12. Inventory of assets, including the fund with which each item was purchased, the date of purchase, the estimated value.
13. For assets purchased with federal dollars, also include the final recipient of the asset, and the date of transfer.
14. The charter holder's final dissolution resolution.
15. A copy of the articles of dissolution.
16. A copy of the 501c3 dissolution notification.
17. A copy of the newspaper notice to unknown claimants.
18. Meeting minutes from all meetings of the closure protocol team and all subcommittee meetings attended by the Closure Team Lead.
19. Any other documentation that may provide important details.